



Barbary Class cruising ketch yacht

£21,995 • Essex Verenigd Koninkrijk • Gebruikt • 1972

Gepresenteerd door

Peter Marchant
Phone: 44(0)1206302003

Morgan Marine
The Boatyard, Shipyard
Estate
CO7 0AR Colchester
Verenigd Koninkrijk



Details

Fabrikant:	Barbary
Model:	Class cruising ketch yacht
Jaar:	1972
Conditie:	Gebruikt
Motor type:	
Brandstoftype:	Diesel
Lengte:	9.91 m (32.51 ft)
Breedte:	3.15 m (10.33 ft)
Cabins:	0
Ligplaatsen:	0



Morgan Marine



7zea.com

Omschrijving

EN

Barbary class cruising ketch yacht just in at Morgan Marine. The Barbary Class Ketch are well respected and proven cruising boats. Traditional in design and built strongly, and are capable of impressive sailing performance and guaranteed seakeeping abilities. Barbary Rose represents excellent potential for coastal hopping, offshore cruising and even as a small liveaboard - This boat is a good example of the range, and has been consistently and carefully maintained, inside and out.

Deck: Mast head bermudian ketch rig, the main mast with single inline spreaders and the mizzen mast with single inline spreaders and jumper strut. Main sail - by Arun sails. Mizzen - By James Lawrence sails. Furling genoa in white polestar. Self draining cockpit. Pulpit. Stern guard. Stanchions. Handrails. Fenders and ropes. Mooring cleats. Electric windlass with anchor and chain. Hatches.

Cabin: 6 Berths. Double berth by conversion of dinette arrangement. Single V berths on either side of the fore cabin. Single berths on either side of the aft cabin. Galley with sink, fridge and cooker. Head compartment with marine toilet and sink. Cabin lights. Interior curtains.

Cockpit: Self draining cockpit with rigid wheel shelter with GRP top and alloy frame with toughed glass windows. Aft canopy. Cockpit bench with cushions and lockers. Starboard side steering console. Engine compartment.

Electronics: Raymarine C80 GPS/ Plotter/Radar. Raymarine ST6001 autopilot. Raymarine VHF radio. Raymarine depth sounder, Speed / distance log, Wind speed / direction indicator. Plastimo compass. Sestrel barometer and world clock. Solar panels. Nav lights. Bilge pump. Screen wipers. Horn.

Machinery: 1972 Mercedes Benz OM 636 42hp inboard diesel with shaft drive - Gearbox reconditioned in 2006. Airtone D4 diesel fired cabin heater.

Algemene informatie

Fabrikant:	Barbary
Model:	Class cruising ketch yacht
Jaar:	1972
Conditie:	Gebruikt

Motor

Motor type:	
Brandstoftype:	Diesel

Afmetingen

Lengte:	9.91 m (32.51 ft)
Breedte:	3.15 m (10.33 ft)
Diep:	1.45 m (4.76 ft)
Gewicht:	0 ()

Accommodatie

Cabins:	0
Ligplaatsen:	0

Afbeeldingen

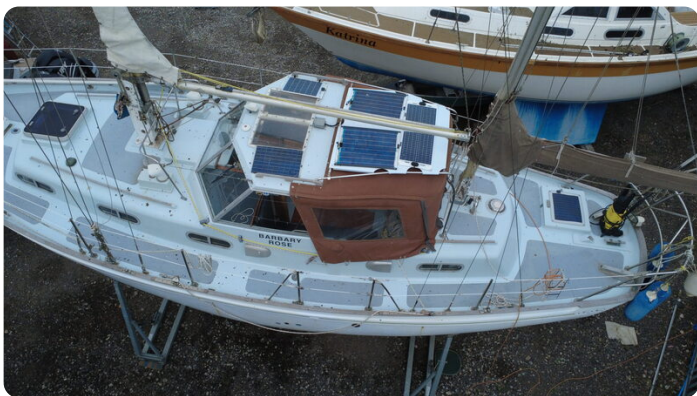
















Morgan Marine

The Boatyard, Shipyard Estate
CO7 0AR Colchester
Verenigd Koninkrijk
Telefoon: 44(0)1206302003
<https://morganmarine.com>

