



Beneteau Flyer 10

£149,995 • Essex Verenigd Koninkrijk • Gebruikt • 2021

Gepresenteerd door

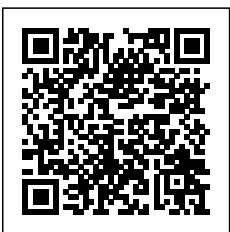
Peter Marchant
Phone: 44(0)1206302003

Morgan Marine
The Boatyard, Shipyard
Estate
CO7 0AR Colchester
Verenigd Koninkrijk

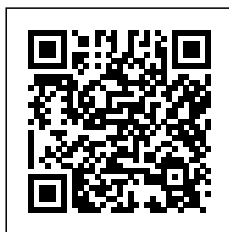


Details

Fabrikant:	Beneteau
Model:	Flyer 10
Jaar:	2021
Conditie:	Gebruikt
Motor type:	
Brandstoftype:	Benzine
Lengte:	9.98 m (32.74 ft)
Breedte:	3.32 m (10.89 ft)
Cabins:	0
Ligplaatsen:	0



Morgan Marine



7zea.com

Omschrijving

EN

2021 Beneteau Flyer 10 with Twin Suzuki 300 APX outboard engines. This Flyer 10 is presented in good condition boasting a huge speciation with all of the extras you could need. With only 130 hours on the engines. The popular Beneteau Flyer 10 ticks many customers wish lists with her high specification including copper coated hull, Large array of upgraded electronics featuring a 16" chartplotter, bow thruster, Webasto diesel heating, Garmin Fantom 18HD Radar, full enclosure canopies and lots more! The twin 300s boast circa 40 knot performance. With spacious interior and good cabin layout this boat not only offers great living accommodation with all round visibility for all year round use but she also is fully equipped with her bursting list of extras!. Viewing now available at Morgan Marine. Probably the best specified and best priced Beneteau Flyer 10 on the market!

Deck: Stainless steel bow fitting with roller with anchor and chain. Self bailing mooring locker with hatch cover. Eye bolt. Mooring cleats. Open pulpit. Stainless steel handrails. Mooring lines and ropes. Console, pilot, sunbed and bench covers. Stainless steel T-top with GRP roof. Wakeboard water skiing mast. Teak boarding platform with ladder. Helmsman protection with aft cover. Bespoke Stainless Steel Dinghy rack with ski arch.

Cabin: Forward cabin (1.87m headroom) with v shaped seating with table which converts into double berth). 24 inch TV Avtex in front cabin. Storage under seating. Overhead lighting. Carpets and curtains thought-out. Mid cabin with double berth and storage. Port side galley area with microwave oven, fridge and storage. Woodwork in Alpi Walnut. Separate heads compartment with fresh water electric toilet, sink, porthole, towel rail and stand up shower area separated by translucent door.

Cockpit: Wide and deep self draining teak cockpit. Cockpit galley with additional fridge, sink with retractable tap, glass holders and Thetford top-line 922 twin gas cooker. Cockpit shower. C-shape cockpit seating with rear seating that converts into sunbed, and natural solid wood cockpit table. Large cockpit locker with gas piston assisted opening and access ladder. Forward bow 3x persons sun beds. Pilot and co-pilot bolster seats. Armrest with glove box storage. Port side bench seating with footrest. Dash with full engine controls, steering wheel and compass. Access to cabin area through translucent glass sliding door.

Electronics: Upgraded electronics pack including - Garmin 16 inch chart plotter. Garmin Fantom 18HD (Solid state) radar with Scanstrut bracket. 2kva smart inverter system. Garmin GT21 -TH sensor. Garmin 215 VHF radio. Fusion MS-RA70N audio with 6x speakers. Suzuki engine gauges. Navigation lights. Electric and manual bilge pump. 12v socket. Underwater lights. Electric windlass. Compass.

Machinery: Twin Suzuki 300 APX outboard engines with power trim and tilt. Engines serviced in July 2025. Webasto diesel heating. Zipwake automatic trim tabs. Hydraulic steering. Water tank capacity - 160L. Fuel tank capacity - 2x 400L.

Algemene informatie

Fabrikant:	Beneteau
Model:	Flyer 10
Jaar:	2021
Conditie:	Gebruikt

Motor

Motor type:	
Brandstoftype:	Benzine

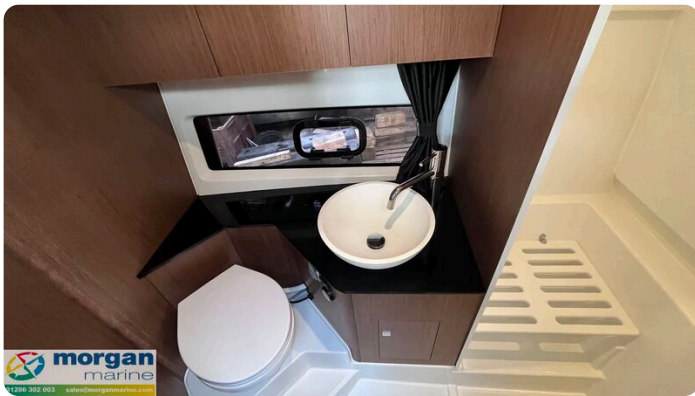
Afmetingen

Lengte:	9.98 m (32.74 ft)
Breedte:	3.32 m (10.89 ft)
Diep:	1.3 m (4.27 ft)
Gewicht:	0 ()

Accommodatie

Cabins:	0
Ligplaatsen:	0

Afbeeldingen







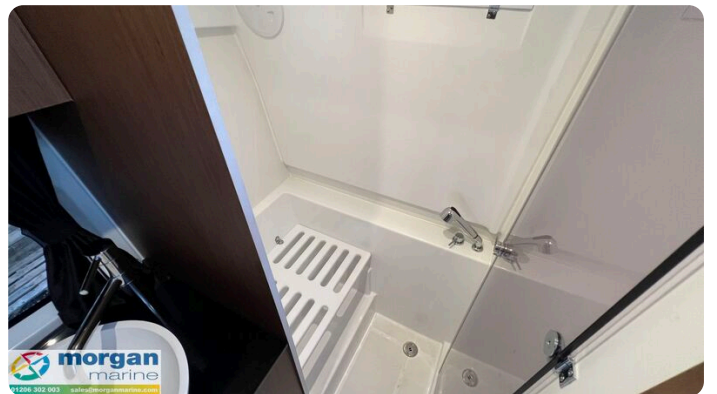


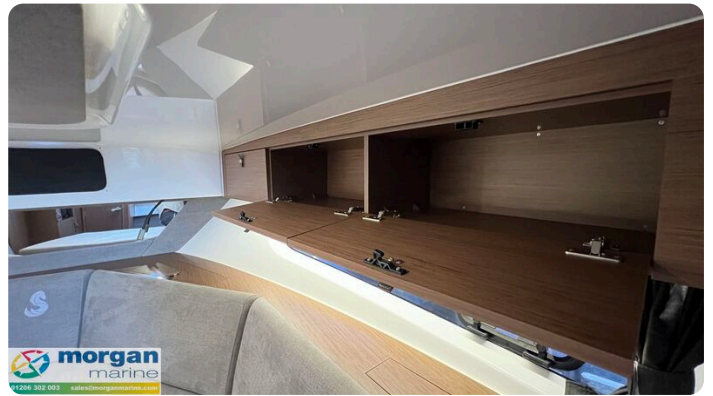




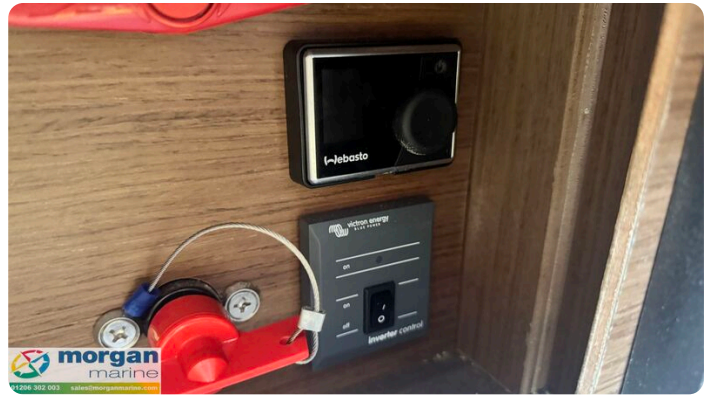












Morgan Marine

The Boatyard, Shipyard Estate
CO7 0AR Colchester
Verenigd Koninkrijk

Telefoon: 44(0)1206302003

<https://morganmarine.com>

