



Colvic UFO 31 Masthead Sloop

£8,750 • Brightlingsea United Kingdom (UK) • Used • 1979

Presented by

Peter Marchant
Phone: 44(0)1206302003

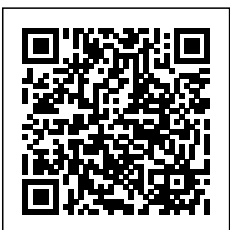
Morgan Marine

The Boatyard, Shipyard
Estate
CO7 0AR Colchester
United Kingdom (UK)

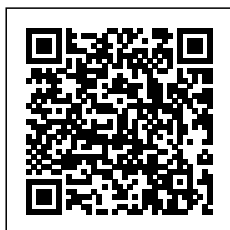


Details

Make:	Colvic
Model:	UFO 31 Masthead Sloop
Year:	1979
Condition:	Used
Engine:	, 250 hp
Engine type:	
Length:	9.41 m (30.87 ft)
Beam:	3.06 m (10.04 ft)
Cabins:	0
Berths:	0



Morgan Marine



7zea.com

Description

EN
1979 Colvic UFO 31 Masthead Sloop just in at Morgan Marine. Designed by industry renowned Holman and Pye, the Colvic UFO 31 sailboat range was built between 1976 and 1981. Light, stable and stiff, this boat is a fast and very seaworthy sailboat, designed for both sporty performance and comfortable cruising. This yacht offers a surprising spacious and well thought out interior, ideal for longer trips. Thanks to its solid construction and excellent sailing characteristics, the UFO 31 is a reliable and good sailing yacht. Early viewing is a must!

Deck: Crusader mainsail with lazy jacks with cover and furling Genoa. Spinnaker and Jib sail. 1.5 Ton of lead in keel. Spare no2 Genoa. Spinnaker and poles. Opening deck hatch. Pushpit and Pulpit. Guard rails. Fenders and lines. Boat hook. Anchor ball and motoring cone. Winch covers and two winch handles. Anchor with rope and chain. Danbuoy, Horse shoe life buoy, Emergency throwing line and 2 lanyards. 2 Crew saver lifejackets. Ensign. 3 Person Waveline 2.7m tender with Honda BF2hp outboard with Pushpit outboard bracket. Hull osmosis treated and epoxy coated with Blakes SFE system according to survey. Survey available from 2009 to 2016.

Cabin: Large saloon area with 2 settees and 2 pilot berths, Forepeak with 2 berths both with foam mattresses and cushions. Forward berth with deck hatch. Hanging wardrobe and lots of deep lockers and shelves. Toilet compartment with sink and sea toilet. Galley with Dometic 2 burner with oven stove, sink and storage. 2x Fire extinguishers and fire blanket.

Cockpit: Bench style seating cockpit with 4x cockpit lockers with storage. Tiller steering. Sliding hatch to enter saloon.

Electronics: Lowrance Link 8 VHF radio connected with Lowrance chartplotter / GPS (charts out of date). Radar reflector. Raymarine tiller pilot. Oil extractor. 2 starter and 1 leisure batteries with 100W solar panel and charger unit. Internal speakers and amplifier with jack input. NASA instruments - depth and wind (Wind speed instrument needs servicing and water speed needs replacing.) Compass. Hand held fog horn.

Machinery: Yanmar 2GM20FC 18hp diesel inboard engine with 2 cylinders and SD20 sail drive unit. Fixed prop. Engine of unspecified running hours, but has not been heavily used by the owner as sailing is preferred to motoring. Engine has been reliable and runs cleanly. Fuel tank capacity - 40 Litres.

General information

Make:	Colvic
Model:	UFO 31 Masthead Sloop
Year:	1979
Condition:	Used

Engine

Engine:	, 250 hp
Engine type:	

Measurements

Length:	9.41 m (30.87 ft)
Beam:	3.06 m (10.04 ft)
Deep:	1.68 m (5.51 ft)
Weight:	0 ()

Accommodation

Cabins:	0
Berths:	0



UFO 31 - mast



UFO 31 - hull



UFO 31 - rudder



UFO 31 - back



UFO 31 - mast



UFO 31 - overview



UFO 31 - plotter



UFO 31 - deck



UFO 31 - locker seating



UFO 31 - lockers



UFO 31 - cockpit



UFO 31 - hatch on bow



UFO 31 - hatch



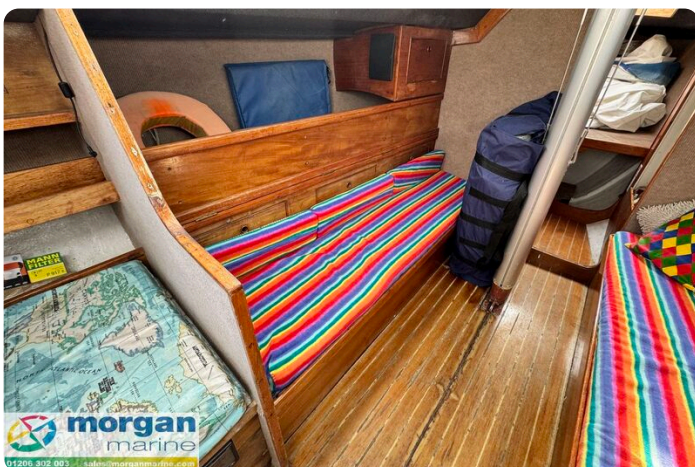
UFO 31 - electronics



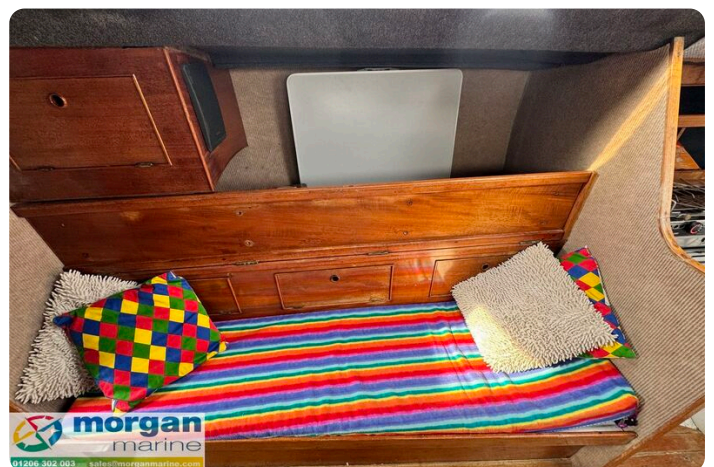
UFO 31 - galley



UFO 31 - seating



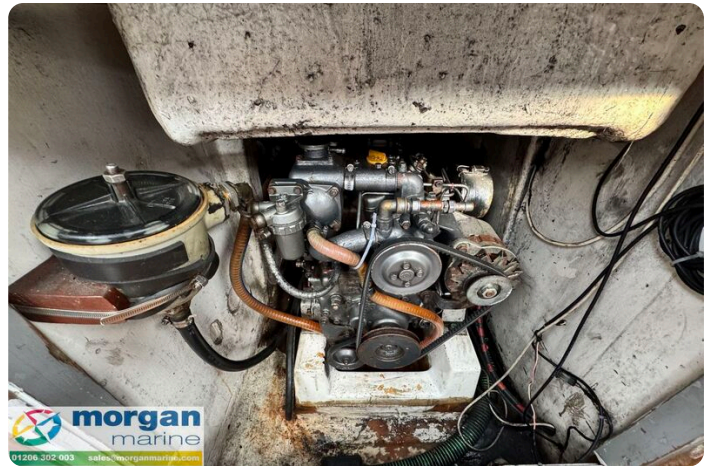
UFO 31 - bench



UFO 31 - bench seating



UFO 31 - steps



UFO 31 - engine



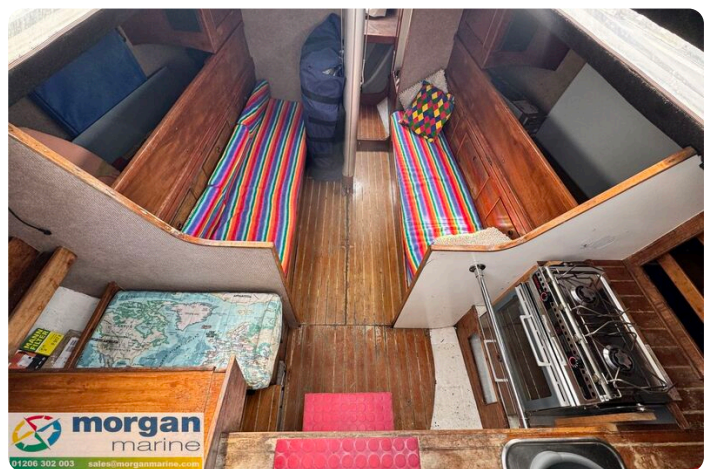
UFO 31 - toilet



UFO 31 - berth



UFO 31 - pole



UFO 31 - saloon



UFO 31 - panel



UFO 31 - steps



UFO 31 - VHF



UFO 31 - solar panel



UFO 31 - cockpit



UFO 31 - Main



UFO 31 - bow



UFO 31 - side



UFO 31 - back view

Morgan Marine

The Boatyard, Shipyard Estate
CO7 0AR Colchester
United Kingdom (UK)

Phone: 44(0)1206302003

<https://morganmarine.com>

