



Fairline Targa 43

£139,950 • Southern Spain Spain • Used • 2003

Presented by

Justin Garwell
Phone: +44 (0) 1305 766504

JD YACHTS LIMITED
80 THE ESPLANADE
DT4 7AA WEYMOUTH
United Kingdom (UK)

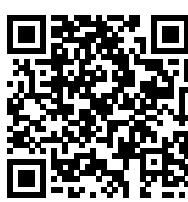


Details

Make:	Fairline
Model:	Targa 43
Year:	2003
Condition:	Used
Engine:	Volvo TAMD 75P EDC, 480 hp
Engine type:	
Fuel type:	Diesel
Length:	13.74 m (45.08 ft)
Beam:	3.8 m (12.47 ft)
Cabins:	0
Berths:	0



JD YACHTS
LIMITED



7zea.com

Description

ENG
2003. 2 x 480 HP Volvo TAMD 75P EDC
6 berths in 2 cabins
Lying: Southern Spain Spain

ENG
Extras

Raymarine e120 GPS Chartplotter
Raymarine Radome
Onan Generator
Air Conditioning
Passerelle
Cockpit Griddle

Standard Specification

Galley

Recessed two burner hob, with oven and grill
3 cu.ft. (85L) refrigerator with automatic 12v/240v change-over
Sink and drainer with hot and cold mixer tap
Solid worktop with sink and hob covers
Two stainless steel portholes
Halogen ceiling and worktop lights
Cupboards and crockery stowage
Lacquered cupboard doors
Stainless steel grab rail
Extractor fan

Engine Mechanical

Engine room soundproofing
GRP engine access hatch with stainless steel pneumatic support struts
Water cooled engine exhausts with silencers and side outlets
Aerodynamically designed engine air intakes
Automatic engine bay fire extinguishers
Stainless steel shafts (TEMET)
4-blade contra-rotating Manganese Bronze propellers
Manganese Bronze P brackets
Balanced rudders
Cathodic protection
Automatic bilge pumps for engine bay and rudder bay with manual on override
Electric engine bay fans
Engine bay lights
Sea cocks on all inlets/outlets below waterline
All stern gear, engines, fuel tanks etc. electrically bonded
Exhaust overheat warning system
Dripless shaft seals

Hull

Designed by Bernard Olesinski and the Fairline design team
Deep V forward; 18° deadrise aft
Full length moulded spray deflectors
Isophthalic gel coat backed by isophthalic resin-rich powder-bound glass mat
All gel coat and glass fibre laid up by hand, with unidirectional and woven rovings
Transverse and longitudinal strengthening stringers throughout hull
Hull/deck join bolted and bonded
Coloured hull top band
6hp bowthruster

Deck And Hull

Stainless steel stemhead roller
Delta anchor
20 fathoms chain
Twin stainless steel fairleads and bow, spring and stern cleats
Grab rail and cleat on each transom wing
Stainless steel pulpit and pushpit
Stainless steel rubbing strake
Full set of IMCO navigation lights
Riding light
Water and fuel fillers
Moulded non-slip deck surface
Transom gate from cockpit to integral teak-laid bathing platform
Hot and cold water transom shower
Concealed transom ladder
Recessed self-draining area on foredeck for optional coachroof sun cushions
Remote control searchlight

Electrical

All 240 volt and 12 volt circuits protected by circuit breakers on main electrical load control panel in saloon
Isolating switches to all batteries

Cockpit

Self-draining
C-shaped central dining area
Liferaft stowage
Folding table on height adjustable leg
Cockpit bar with sink, hot and cold water, wine and drinks cooler, glass and bottle storage
Stowage lockers under cockpit seats
Aft sunbed with non-absorbent foam cushions
Warp and fender stowage lockers under sunbed
Transom gate
Side deck access steps from both walkways
Teak-laid floor throughout
Two part cockpit hood, forward section converting to sun canopy
Drinks holders
Cockpit lights under GRP arch and in walkways
Tonneau cover
Heavy duty 12v socket

Standard Features

Horizontally and vertically adjustable helm seat with lift up semi-bolster section
Tilt-adjustable steering wheel
Reversible electric anchor winch
Electra-hydraulic trim tabs with cathodic protection
Echosounder and speedometer/distance log with sea water temperature read out
VHF radio telephone
Stereo radio/CD player with saloon and cockpit speakers
Hot and cold water transom shower
Wine and drinks cooler in cockpit
2 part cockpit hood on stainless steel frame converts to sun canopy and stows easily against GRP arch
6hp bowthruster
Delta anchor
20 fathoms chain
Horn
Wrap around, alloy framed, curved toughened glass windscreen
Stainless steel rubbing strake
50 amp regulated battery charger
Teak-laid cockpit floor and bathing platform
Hangar for concealed stowage of optional dinghy and outboard beneath aft sun deck

Sunbathing cushions in non-absorbent foam for aft sundeck
Coloured hull top band

General information

Make:	Fairline
Model:	Targa 43
Year:	2003
Condition:	Used

Engine

Engine:	Volvo TAMD 75P EDC, 480 hp
Engine type:	
Fuel type:	Diesel

Measurements

Length:	13.74 m (45.08 ft)
Beam:	3.8 m (12.47 ft)
Deep:	1 m (3.28 ft)
Weight:	10000 ()

Accommodation

Cabins:	0
Berths:	0

Images



Image courtesy of JD Yachts



Image courtesy of JD Yachts



Image courtesy of JD Yachts



Image courtesy of JD Yachts



Image courtesy of JD Yachts



Image courtesy of JD Yachts



Image courtesy of JD Yachts



Image courtesy of JD Yachts



Image courtesy of JD Yachts



Image courtesy of JD Yachts



Image courtesy of JD Yachts



Image courtesy of JD Yachts

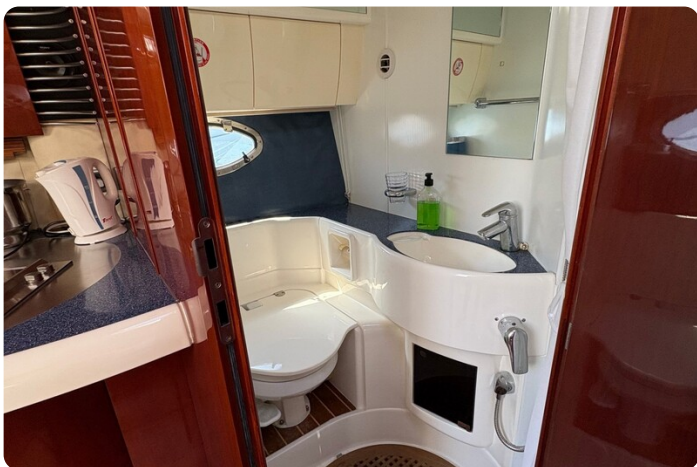


Image courtesy of JD Yachts



Image courtesy of JD Yachts



Image courtesy of JD Yachts



Image courtesy of JD Yachts

JD YACHTS LIMITED

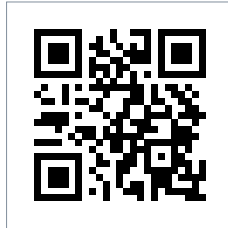
80 THE ESPLANADE

DT4 7AA WEYMOUTH

United Kingdom (UK)

Phone: +44 (0) 1305 766504

<http://jdyachts.com>



 YACHTS.