



Fairline Targa 50 GT Open

£690,000 • Norway • Used • 2023

Presented by

Justin Garwell
Phone: +44 (0) 1305 766504

JD YACHTS LIMITED
80 THE ESPLANADE
DT4 7AA WEYMOUTH
United Kingdom (UK)



Details

Make:	Fairline
Model:	Targa 50 GT Open
Year:	2023
Condition:	Used
Engine:	Volvo Penta IPS 650 D6-480, 960 hp
Engine type:	
Fuel type:	Diesel
Length:	15.64 m (51.31 ft)
Beam:	4.32 m (14.17 ft)
Cabins:	0
Berths:	0



JD YACHTS
LIMITED



7zea.com

Description

ENG
2023. 2 x 960 HP Volvo Penta IPS 650 D6-480
6 berths in 3 cabins
Lying: Norway

ENG
Extras

Air Conditioning to Cockpit
Bow Thruster
Carrara White Worktops
Charcoal Cockpit Canopy
Cockpit Bar with Integrated Sink, Griddle, Fridge & Ice maker
COMFORT System: Auto Trim & Auto List
Dishwasher to Galley
Dove Grey Oak Flooring to Saloon & Galley
Eberspächer® Hydronic Heating System to Interior & Cockpit with Windscreen Demist
Electric Hardtop
Foredeck Sunbed Cushions
Freshwater Deck Wash Outlets
Fusion® PLUS Audio/ Visual
Fusion® PLUS Additional Speakers & Subwoofer to Cockpit
Garmin® B00(i) Automatic Identification System (AIS)
Garmin® GMR Fantom 24" Dome Radar
Garmin® GPSMap 12" Chartplotter Touchscreen Display to Helm
Garage Fit Out: Winch and Roller System for Williams® 285 TurboJET
Hydraulic High/ Low Bathing Platform
Interior Mood Lighting
Lewmar® Semi-Automatic Anchor System to Helm with Chain Counter, Polished Stainless 27kg Ultra Anchor, 50m of 8mm Stainless Steel Chain & Bow Plate
Mosquito Screens to Opening Portholes
Movida Macadamia Cockpit Upholstery
Open Bow Pulpit Rail
Power Inverter
Reverse-Cycle Air Conditioning to Interior
Skylight to Lower Saloon with Integrated Blind
Silver Bullion Venetian 25mm Blinds
Smart TVs, Apollo® Audio & Flush-Mounted Speakers to Lower Saloon & Forward Cabin
Teak Cockpit Table with Cantilever Leg for Stowage
Teak Laid Bathing Platform
Teak Laid Cockpit
Teak Laid Passarelle
Upgraded 3 cabin model
Volvo Penta Joystick Control
Walnut Satin Timber
White Exterior Mood Lighting
WiFi Connectivity Throughout
Underwater Transom Lights x 2 (dual colour blue/white)
Universal-fit Chocks with Pad-Eyes to Bathing Platform
2.9m Hydraulic Letterbox Passarelle

Standard Specification

Deck

Anchor chain locker
Anchor winch & controls
High/ Low Bathing platform
Bathing platform swim ladder
Calibrated galvanised anchor chain
Carbon fibre ensign staff
Full set of IMCO navigation lights
Hot & cold-water transom shower
Moulded non-slip deck surface

Riding light
Rubbing strake
Stainless steel bow, spring & stern cleats
Stainless steel bow fairleads
Stainless steel pulpit rail
Stainless steel stemhead roller
Stainless steel transom wing cleats
Toughened glass curved single piece windscreen
Twin horns
Water filler
Windscreen washes and wipers

Cockpit

Boat hook
Companion seat
Cup holders
Engine room access hatch
Fender stowage
Fixed height table
Fusion® Apollo audio
Life raft stowage
Manual bilge pumps
Mooring lines & stowage
Moulded non-slip deck surface
Seating with storage
Transom gate
Teak laid floor
Warp lockers

Helm

Analogue gauges
Bilge pump switches with integral operating warning lights & audible alarms
Controls for engine bay fire extinguisher system
Cup holders
Electronic single-lever throttle & gear controls
Full digital engine instrumentation including; tachometers, oil pressure gauges, temperature gauges, audible alarms & engine hour meters
High speed magnetic compass
Opening window
Remote anchor winch controls
Ruder position indicator
Searchlight control
Twin helm seats with storage to base

Third Cabin

Bunk beds (x2)
Carpet
Full length mirror
LED ceiling lights
Opening porthole
Reading lights
Venetian blind
Wardrobe

Galley

Ceramic hob
Electrical control panel
Extractor fan
Eye-level storage lockers
Fire extinguisher
Fridge/freezer
Integrated waste bin
LED ceiling lights
Microwave combi oven

Sink with hot & cold mixer tap
Timber floor
Underfloor larder
Venetian blind

VIP Forward Cabin

Bedside tables
Carpet
Escape hatch to foredeck with blind
Eye-level storage lockers
Feature windows with single opening porthole
Full length mirror
LED ceiling lights
Reading lights
Sliding scissor berth
Storage drawers under bed
Upholstered bed head & surround
Venetian blinds
Wardrobes

VIP Forward Cabin En Suite

Electric silent-flush freshwater toilet
Extractor fan
Feature window with opening porthole
Full set of bathroom fittings
Full standing height shower
Mirror
Shower tray automatic pump-out system
Solid Surface® vanity unit with locker & basin
Stowage locker
Timber floor
Towel rail
Towel set
Venetian blind

Master Cabin

Bedside tables
Carpet
Double bed
Feature windows with opening portholes
Fusion® Apollo audio
LED ceiling lights
Reading lights
Sofa
TV
Upholstered bedhead & surround
Venetian blinds
Wardrobes with mirrored doors

Master Cabin En Suite

Electric silent-flush freshwater toilet
Extractor fan
Eye-level storage lockers
Feature window with single opening porthole
Full set of bathroom fittings
Full standing height shower
LED ceiling lights
Mirror
Shower tray automatic pump-out system
Solid Surface® vanity unit with locker and basin
Timber floor
Towel rail
Towel set
Venetian blind

General information

Make:	Fairline
Model:	Targa 50 GT Open
Year:	2023
Condition:	Used

Engine

Engine:	Volvo Penta IPS 650 D6-480, 960 hp
Engine type:	
Fuel type:	Diesel

Measurements

Length:	15.64 m (51.31 ft)
Beam:	4.32 m (14.17 ft)
Deep:	1.17 m (3.84 ft)
Weight:	13000 ()

Accommodation

Cabins:	0
Berths:	0

Images



Image courtesy of JD Yachts



Image courtesy of JD Yachts



Image courtesy of JD Yachts



Image courtesy of JD Yachts



Image courtesy of JD Yachts



Image courtesy of JD Yachts



Image courtesy of JD Yachts



Image courtesy of JD Yachts



Image courtesy of JD Yachts



Image courtesy of JD Yachts



Image courtesy of JD Yachts



Image courtesy of JD Yachts



Image courtesy of JD Yachts



Image courtesy of JD Yachts



Image courtesy of JD Yachts



Image courtesy of JD Yachts



Image courtesy of JD Yachts



Image courtesy of JD Yachts



Image courtesy of JD Yachts



Image courtesy of JD Yachts



Image courtesy of JD Yachts



Image courtesy of JD Yachts



Image courtesy of JD Yachts



Image courtesy of JD Yachts



Image courtesy of JD Yachts



Image courtesy of JD Yachts



Image courtesy of JD Yachts



Image courtesy of JD Yachts



Image courtesy of JD Yachts



Image courtesy of JD Yachts



Image courtesy of JD Yachts



Image courtesy of JD Yachts



Image courtesy of JD Yachts



Image courtesy of JD Yachts

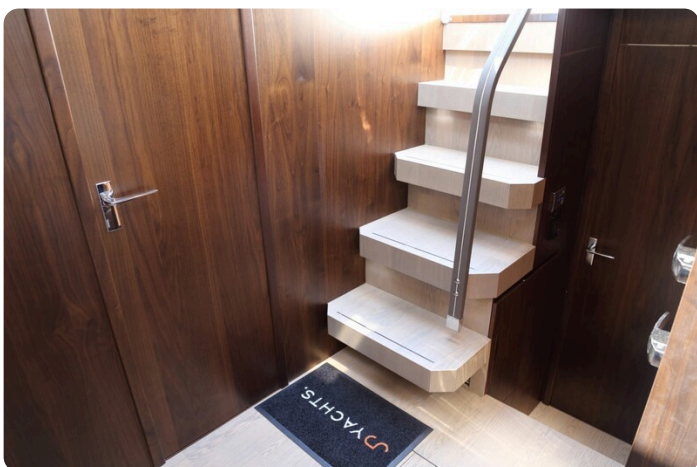


Image courtesy of JD Yachts



Image courtesy of JD Yachts



Image courtesy of JD Yachts



Image courtesy of JD Yachts



Image courtesy of JD Yachts



Image courtesy of JD Yachts



Image courtesy of JD Yachts



Image courtesy of JD Yachts



Image courtesy of JD Yachts



Image courtesy of JD Yachts



Image courtesy of JD Yachts



Image courtesy of JD Yachts

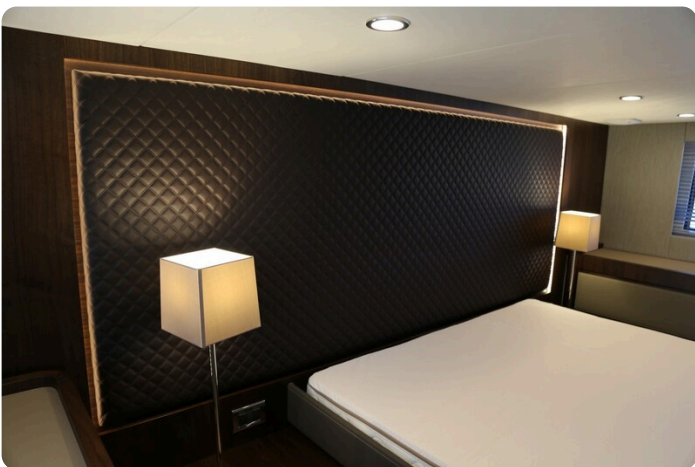


Image courtesy of JD Yachts

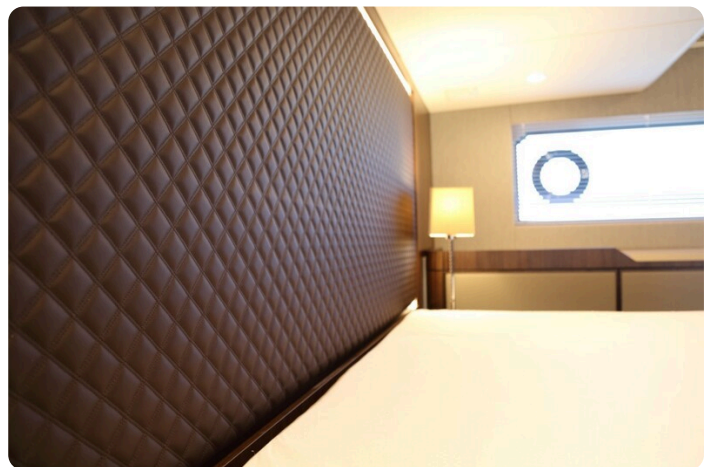


Image courtesy of JD Yachts



Image courtesy of JD Yachts



Image courtesy of JD Yachts



Image courtesy of JD Yachts



Image courtesy of JD Yachts

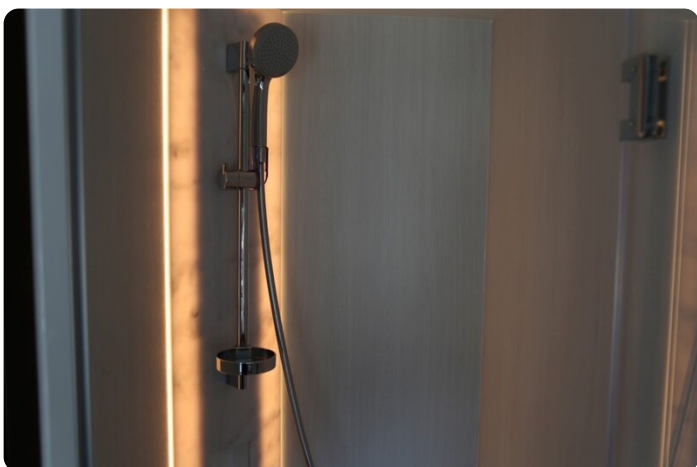


Image courtesy of JD Yachts

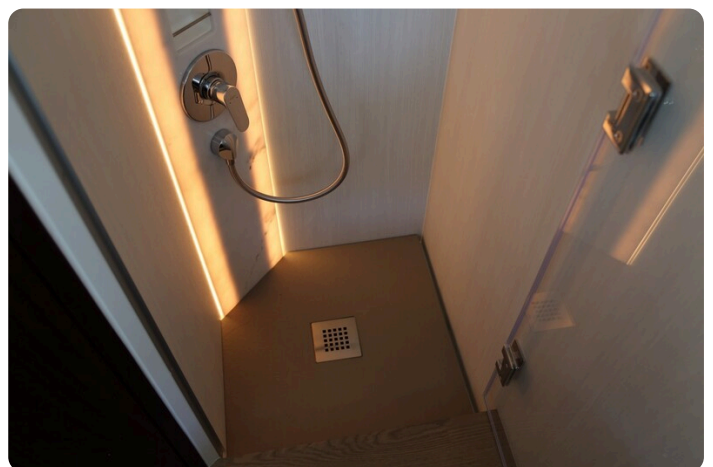


Image courtesy of JD Yachts



Image courtesy of JD Yachts



Image courtesy of JD Yachts



Image courtesy of JD Yachts



Image courtesy of JD Yachts



Image courtesy of JD Yachts



Image courtesy of JD Yachts



Image courtesy of JD Yachts



Image courtesy of JD Yachts



Image courtesy of JD Yachts



Image courtesy of JD Yachts



Image courtesy of JD Yachts



Image courtesy of JD Yachts



Image courtesy of JD Yachts



Image courtesy of JD Yachts

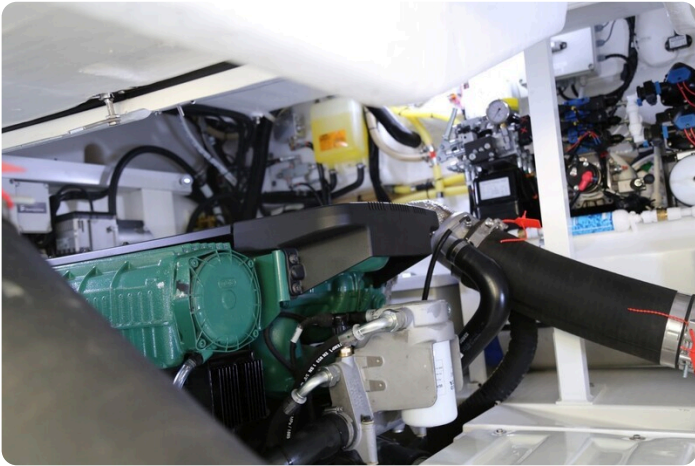


Image courtesy of JD Yachts



Image courtesy of JD Yachts



Image courtesy of JD Yachts



Image courtesy of JD Yachts



Image courtesy of JD Yachts



Image courtesy of JD Yachts



Image courtesy of JD Yachts



Image courtesy of JD Yachts

JD YACHTS LIMITED

80 THE ESPLANADE

DT4 7AA WEYMOUTH

United Kingdom (UK)

Phone: +44 (0) 1305 766504

<http://jdyachts.com>



 YACHTS.

The logo consists of a stylized 'JD' monogram in orange and white, followed by the word 'YACHTS.' in white, all set against a black square background.