



Fibago Italia FIBAGO Camper & Nicholson

€105,000 • Adria Italy • Used • 1978

Presented by

Jan Spengler
Phone: +49 4101 5155566

**Michael Schmidt &
Partner Yachthandels
GmbH**

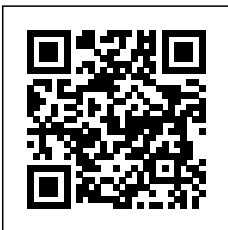
Rübekamp 5
25421 Pinneberg
Germany



Michael Schmidt & Partner
International Yachtbrokers

Details

Make:	Fibago Italia
Model:	FIBAGO Camper & Nicholson
Year:	1978
Condition:	Used
Engine:	Renault, 140 hp
Engine type:	
Fuel type:	Diesel
Fuel tank:	680 l (179.64 gal)
Length:	13.84 m (45.41 ft)
Beam:	4.02 m (13.19 ft)
Cabins:	0
Berths:	0



Michael Schmidt &
Partner Yachthandels
GmbH



7zea.com

Description

EN
generator 3 kW 2025

Navigation equipment:
Rudder angle indicator, MeteoFax, Autopilot (2 x), SSB.

Staging and technical:
Alternator (new), Anchor (70 kg + 120 m 12mm chain), Water pressure pump, Batteries (2024/25), Deck Shower, Bow Thruster (rev. 2024), Wind Generator, Outboard Crane, Outboard engine for tender (TOHATSU 9.9), Solar panels, Fenders, Gangway, Platform, Manual Bilge Pump, Shorepower connector, Electric Windlass, swimming ladder (+ bow ladder), cockpit table, Tender (RIB), Winch, Winch Electric (2 x), Windex.

Domestic Facilities onboard:
Warm Water System (2025), 12V Outlets, 220V Outlets, Manual Toilet.

Security equipment:
Liferaft (2024).

Entertainment:
Speakers, Hi-Fi.

Sails accessories:
Jib Furling System, Lazy Bag (2023), Lazy Jack (2023), Staysail forestay (furling), Vang (2023).

Kitchen and appliances:
Galley, Burner, Icebox.

Upholstery:
Bimini (2024), Sprayhood (2024), Cockpit Cushions (2024).

IT
generatore 3 kW 2025

Strumentazione elettronica di navigazione:
Angolo barra, MeteoFax, Pilota automatico (2 x), SSB.

Allestimento tecnico e di coperta:
Alternatore (new), Ancora (70 kg + 120 m 12mm chain), Autoclave, Batterie (2024/25), Doccia esterna, Elica di prua - bow thruster (rev. 2024), Generatore a vento, Gruette per motore fuoribordo, Motore fuoribordo per tender (TOHATSU 9.9), Pannelli Solari, Parabordi, Passerella, Piattaforma, Pompa di sentina manuale, Presa 220V banchina, Salpa Ancore Elettrico, Scaletta da bagno (+ bow ladder), Tavolo pozzetto, Tender (RIB), Winch, Winch Elettrico (2 x), Windex.

Dotazioni domestiche di bordo:
Boiler (2025), Prese interne 12v, Prese interne 220v, WC marino manuale.

Dotazioni di sicurezza:
Zattera di salvataggio (2024).

Intrattenimento:
Altoparlanti, Stereo.

Accessori Vele:
Avvolgi Fiocco, Lazy Bag (2023), Lazy Jack (2023), Strallo di Trinchetta (furling), Vang rigido (2023).

Cucina ed elettrodomestici:
Cucina, Fornello, Ghiacciaia.

Tappezzerie:
Bimini (2024), Cappottina (2024), Cuscineria Pozzetto (2024).

FR
générateur 3 kW 2025

Equipement électronique de navigation:
Indicateur d'angle de barre, MeteoFax, Pilote automatique (2 x), SSB.

Equipement de pont:
Alternateur (new), Ancre (70 kg + 120 m 12mm chain), Eau sous pression, Batteries (2024/25), Douche de cockpit, Propulseur d'étrave (rev. 2024), Éolienne, Bossoir pour HB, Moteur hors-bord pour annexe (TOHATSU 9.9), Panneau solaire, Défenses, Passerelle, Plateforme arrière, Pompe de cale manuelle, Prise de quai, Guindeau électrique, Echelle de bain (+ bow ladder), table de cockpit, Annexe (RIB), Winch, Winch électrique (2 x), Windex.

Equipement intérieur:
Ballon d'eau chaude (2025), Prises interieures 12v, Prises interieures 220v, Toilettes manuelles.

Equipement de sécurité:
Radeau de survie (2024).

Divers:
Haut-parleurs, Hi-Fi.

Equipement voiles:
Enrouleur de foc, Lazy Bag (2023), Lazy Jack (2023), Etai de trinquette (furling), halebas (2023).

Equipement de confort:
Cuisine, Cuisinière, Glacière.

Sellerie et tauds:
Bimini (2024), Capote (2024), sellerie de cockpit (2024).

DE
Generator 3 kW 2025

Navigation elektronische Instrumentation:
Ruderlageanzeiger, Navtex Empfaenger, Autopilot (2 x), SSB.

Deck und technische Ausrüstung:
Wechselstromgenerator (new), Anker (70 kg + 120 m 12mm chain), Druckwasserpumpe, Batterien (2024/25), Cockpitdusche, Bugstrahlruder (rev. 2024), Windgenerator, Kran für Außenborder, Außenbordmotor für Beiboot (TOHATSU 9.9), Solarpanel, Fender, Gangway, Plattform, manuelle Bilgepumpe, Landanschluß, elektrische Ankerwinde, Badeleiter (+ bow ladder), Cockpittisch, Beiboot (RIB), Winschen, Winschen elektrisch (2 x), Windex.

Anlagen an Bord:
Warmwasserbereiter (2025), 12V Steckdose, 220V Steckdose, manuelles WC.

Sicherheit:
Rettungsinsel (2024).

Unterhaltung:
Lautsprecher, Stereoanlage.

Rigg:
Rollfockanlage, Lazy Bag (2023), Lazy Jack (2023), Kutterstag (furling), Baumniederholer (2023).

Küchen-und Haushaltsgeräte:
Pantry, Herd, Eisbox.

Polster und Persenninge:

Bimini (2024), Sprayhood (2024), Cockpitpolster (2024).

ES
generador 3 kW 2025

Instrumentación electrónica de navegación:
Indicado de ángulo de timón, Meteo fax, Piloto automático (2 x), SSB.

Equipo técnico y de cubierta:
Alternador (new), Ancla (70 kg + 120 m 12mm chain), Bomba de agua dulce, Baterías (2024/25), Ducha externa, Hélice de proa (rev. 2024), Aerogenerador, Grúa para motor fueraborda, Motor fueraborda para auxiliar (TOHATSU 9.9), Paneles solares, Defensas, Pasarela, Plataforma, Bomba de achique manual, Toma de 220V para el puerto, Molinete eléctrico, Escalera de baño (+ bow ladder), mesa de bañera, Auxiliar (RIB), Winch, Cabrestante eléctrico (2 x), Windex.

Enseres domesticos de abodo:
Calentador (2025), Tomas de 12v, Enchufes de 220v, WC marino manual.

Equipo de seguridad:
Balsa salvavidas (2024).

Entretenimiento:
Altavoces, Stereo.

Accesorios Velas:
Enrollador de foque, Lazy Bag (2023), Lazy Jack (2023), Estay de Trinquete (furling), Contra (2023).

Cocina y electrodomésticos:
Cocina, Fogón, Nevera de hielo.

Tapicerías:
Bimini (2024), Capota antirrocciones (2024), Cojinería bañera (2024).

NL
generator 3 kW 2025

Elektronische navigatie-instrumenten:
Roerhoek indicator, Navtex (weerschrijver), Autopiloot (2 x), SSB.

Technische- en dekuitrusting:
Alternator (new), Anker (70 kg + 120 m 12mm chain), Waterdruk systeem, Accu's (2024/25), Buitendouche, Boegschroef (rev. 2024), Windgenerator, Kraan voor buitenboordmotor, Bijboot buitenboordmotor (TOHATSU 9.9), Zonnepanelen, Stootwillen, Loopplank, Platform, Handmatige bilgepomp, Walaansluiting 230V, Elektrische ankerlier, Zwemtrap (+ bow ladder), Kuiltafel, Bijboot (RIB), Lier, Elektrische lier (2 x), Windex.

Huishoudelijke apparatuur aan boord:
Warmwater boiler (2025), 12V Stopcontacten, 230V Stopcontacten, Handmatige toilet.

Veiligheidsuitrusting:
Reddingsvlot (2024).

Vermaak:
Luidsprekers, Stereo.

Accessoires Zeilen:
Rolfok systeem, Lazy Bag (2023), Lazy-Jack systeem (2023), Kotterstag (furling), Giek neerhouder (2023).

Keuken & Apparatuur:
Keuken, Fornuis, Icebox.

Bekleding:
Bimini (2024), Sprayhood (2024), Kuipkussens (2024).

RU
генератор мощностью 3 кВт 2025

Электронные навигационные приборы:
Угол поворота, МетеоФакс, Автопилот (2 x), SSB.

Техническое оснащение и оснащение палубы:
Альтернатор (new), Якорь (70 kg + 120 m 12mm chain), Автоклав, аккумуляторы (2024/25), внешняя душа, Винт носовой части - bowtruster (rev. 2024), ветрогенератор, Подъемные устройства для забортного двигателя, Подвесной мотор для тендера (TOHATSU 9.9), Солнечные панели, Отбойники, сходни, Платформа, Ручной трюмный насос, Прямая розетка от причала, Электрическая якорная лебедка, Трап ванной (+ bow ladder), cockpit table, Тендер (RIB), Лебедка, Электрическая лебедка (2 x), Windex.

Бытовое оснащение на борту:
котлом (2025), Внутренние розетки 12v, Внутренние розетки 220v, Ручной морской туалет.

Оборудование для обеспечения безопасности:
Спасательный плот (2024).

Развлечения:
динамиков, Привет-Fi.

Аксессуары паруса:
Устройство кливер, Lazy Bag (2023), Джек лениво (2023), Стаксель форштаг (furling), Ванг (2023).

Кухня и бытовые приборы:
Кухня, плитой, ледово-поле.

Обивка:
Защитное покрытие лодки (2024), Кожух (2024), Кокпит подушки (2024).

General information

Make:	Fibago Italia
Model:	FIBAGO Camper & Nicholson
Year:	1978
Condition:	Used

Engine

Engine:	Renault, 140 hp
Engine type:	
Fuel type:	Diesel
Fuel tank:	680 l (179.64 gal)

Measurements

Length:	13.84 m (45.41 ft)
Beam:	4.02 m (13.19 ft)
Deep:	1.7 m (5.58 ft)
Weight:	13000 kg (28,659.61 lb)

Accommodation

Cabins:	0
Berths:	0

Images



_DSC2524



_DSC2526



_DSC2527



_DSC2535



_DSC2540



_DSC2548



_DSC2551



_DSC2555



_DSC2559



_DSC2563



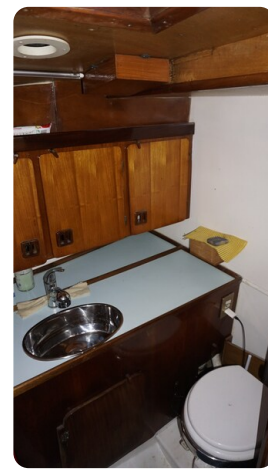
_DSC2565



_DSC2567



_DSC2569



_DSC2573



_DSC2575



_DSC2577



_DSC2581



_DSC2588



_DSC2602



IMG-20251113-WA0007



IMG-20251113-WA0030



IMG-20251113-WA0038



IMG-20251113-WA0043



IMG-20251113-WA0047

Michael Schmidt & Partner Yachthandels GmbH

Rübekamp 5
25421 Pinneberg
Germany

Phone: +49 4101 5155566

<https://www.msp-yacht.de>



Michael Schmidt & Partner
International Yachtbrokers