



Highfield Sport 600

£37,995 • Brightlingsea United Kingdom (UK) • Used • 2025

Presented by
Peter Marchant
Phone: 44(0)1206302003
Morgan Marine
The Boatyard, Shipyard
Estate
CO7 0AR Colchester
United Kingdom (UK)



Details

Make:	Highfield
Model:	Sport 600
Year:	2025
Condition:	Used
Engine:	, 300 hp
Engine type:	
Fuel type:	Gasoline
Length:	6.26 m (20.54 ft)
Beam:	2.49 m (8.17 ft)
Cabins:	0
Berths:	0



Morgan Marine



7zea.com

Description

EN

Highfield Sport 600 Aluminium RIB with Suzuki DF115 BGTX Outboard with only Approx 34 hours! – Just Arrived at Morgan Marine. Originally sold new by us and with only owner from new, this Highfield Sport 600 offers excellent performance of circa 36 knots and exceptional handling thanks to its ingenious aluminium hull design. With an impressive 26-degree deadrise, this boat provides outstanding reassurance and comfort even in tougher conditions. The marine grade aluminium hull offers clear advantages over traditional GRP construction, including no risk of delamination, no gel-coat chips, and a structure that is both stronger and lighter, resulting in improved performance and efficiency. This Highfield Sport 600 comes fully equipped and ready to hit the water, featuring a Garmin Echomap 9-inch chart plotter, Garmin VHF 115i radio, GT20-TM transducer, Fusion Apollo SRX400 audio system with two XS Sport 6.5-inch LED speakers, a sun deck with infill cushions, an A-frame, and much more. The package is completed with an SBS 1900 roller trailer, making it ideal for easy towing or for use with Morgan Marine’s park and ride services. This is a superbly specified, high-performance RIB in excellent condition, and early viewing is highly recommended.

Cabin: N/A

Cockpit: SUS750 Console with forward seat. Bolster 800 seating with pilot and co-pilot seat. Pop up rear table. Carbon dash for console. A-frame roll bar. Sun deck with infill cushions. Cup holders.

Electronics: Garmin Echomap UHD2 95 - 9inch chart plotter. Garmin VHF 115i radio. GT20 -TM transducer. Fusion Apollo SRX400 with 2x XS Sport 6.5 inch LED speakers. Anchor light. Navigation lights. Switch panel. Isolator switch. Automatic bilge pump.

Machinery: Suzuki DF115 BGTX Outboard with hydraulic steering system. Internal under-deck fuel tanks. Fuel capacity: 105L.

Trailer: SBS R2/1900EL 2 wheel roller trailer with jockey wheel, hitch and winch. NB - the road trailer may not be in serviceable road worthy condition. It is recommended the buyer should inspect and service accordingly prior to use on public roads.

General information

Make:	Highfield
Model:	Sport 600
Year:	2025
Condition:	Used

Engine

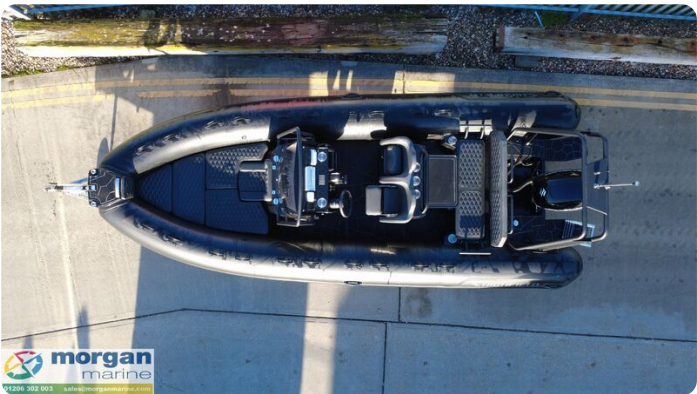
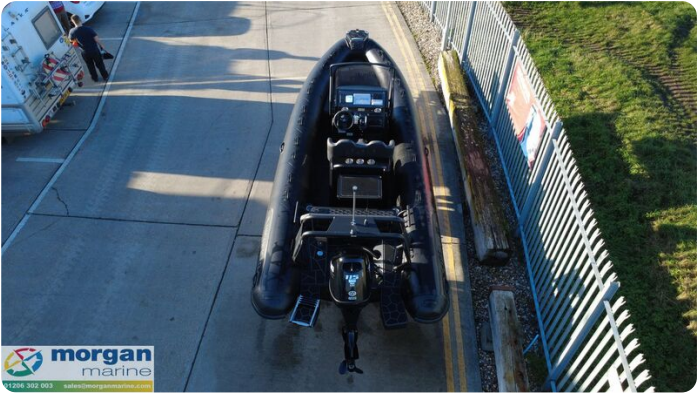
Engine:	, 300 hp
Engine type:	
Fuel type:	Gasoline

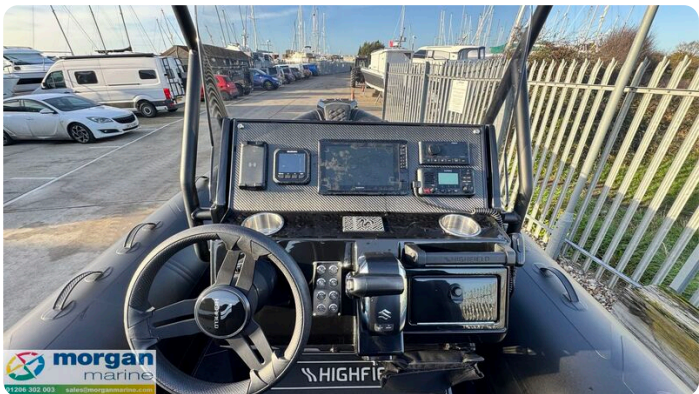
Measurements

Length:	6.26 m (20.54 ft)
Beam:	2.49 m (8.17 ft)
Deep:	0 m (0.00 ft)
Weight:	0 ()

Accommodation

Cabins:	0
Berths:	0











Morgan Marine

The Boatyard, Shipyard Estate
CO7 0AR Colchester
United Kingdom (UK)

Phone: 44(0)1206302003

<https://morganmarine.com>

