



Jeanneau NC 14

£279,995 • Brightlingsea United Kingdom (UK) • Used • 2015

Presented by

Peter Marchant
Phone: 44(0)1206302003

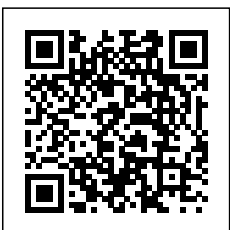
Morgan Marine

The Boatyard, Shipyard
Estate
CO7 0AR Colchester
United Kingdom (UK)



Details

Make:	Jeanneau
Model:	NC 14
Year:	2015
Condition:	Used
Engine:	, 300 hp
Engine type:	
Fuel type:	Diesel
Length:	13.93 m (45.70 ft)
Beam:	4.1 m (13.45 ft)
Cabins:	0
Berths:	0



Morgan Marine



7zea.com

Description

EN

Jeanneau NC 14 presented in stunning condition with Volvo Penta IPS400 pod drives + Joystick and huge specification. With elegant lines and curves the NC14 presents a timeless design perfect for cruising northern Europe. She will top out at circa 26 knots and offer a cruising speed of 21-22 knots. This NC14 is a credit to her previous owner and we believe she is the best presented NC14 currently on the market with no expense spared. Recent upgrades included new canopies, new master mattress and front sun pad cushions. Factory fitted options included; Premier Trim Level, water heater, electronics and fresh water toilet, Webasto diesel heating, Bow thruster, Radar and much more. Complemented with a engine service and IPS drive service in May 2025 and just polished and antifouled along with many other upgrades such as new carpets in the main saloon. NC stands for New Concept - the ultimate use of available space; providing a high level of comfort in an airy and roomy wheelhouse with deck saloon and side door access to deck. There are two cabins below deck with separate shower and head compartment and lots of storage. She was commissioned new in December 2014, however is a 2015 model boat and hull. Safe family boating with CE Category B for 12 people - we recommend early viewing as she will give her new owner many years of boating enjoyment!

Cabin: Large forward masters with double berth (new mattress 2023), hanging storage, under berth storage, hatch to deck, windows, lights, mirror and fold up vanity unit with mirror 2nd cabin with large double double with windows, porthole and storage. Toilet compartment with Jack and Jill doors with electric toilet (plus holding tank), washbasin, separate shower unit, mirror and storage. Galley with stainless steel sink and hot/cold water, 2x Burner hob with oven, Fridge and worktop area with storage. Cushions and curtains in saloon / cabins. Walnut interior with linen saloon upholstery with table also converts to double berth. Dinging area removeable into a sofa.

Cockpit: Wheelhouse with electric sunroof, Transparent patio sliding doors (port and aft). Pilot bench seat with dash and engine controls plus access to helm side door. Teak cockpit floor. Windscreen with defogger and electric windscreen wipers with screen wash. Under saloon floor storage - perfect space to add a washing machine. Hot and cold cockpit shower. Rear cockpit with locker for multiuse space on cockpit and / or bathing platform. Great 360 degree viewing in light and airy wheelhouse. Triple glazed sliding back doors, between wheelhouse and cockpit - gives year round usability and safety at sea; as well as comfort and warmth.

Electronics: Indoor electronics - Raymarine C127 chartplotter with sounder. Digital radar. Rokk wireless phone charger. VHF radio with AIS. Volvo Penta engine display. Fusion audio system with speakers. Electric trim tabs. Webasto diesel heating. Inside and outside LED lights. Electric opening sunroof. Compass. Navigation lights.

Machinery: Volvo Penta IPS400 pod drives with joystick control - Last serviced in May 2025 Bow thruster with remote. New anodes 2025. Fuel capacity - Twin fuel tanks- 600 litres. Water capacity -Twin water tanks - 200 Litres.

General information

Make:	Jeanneau
Model:	NC 14
Year:	2015
Condition:	Used

Engine

Engine:	, 300 hp
Engine type:	
Fuel type:	Diesel

Measurements

Length:	13.93 m (45.70 ft)
Beam:	4.1 m (13.45 ft)
Deep:	0.75 m (2.46 ft)
Weight:	0 ()

Accommodation

Cabins:	0
Berths:	0





















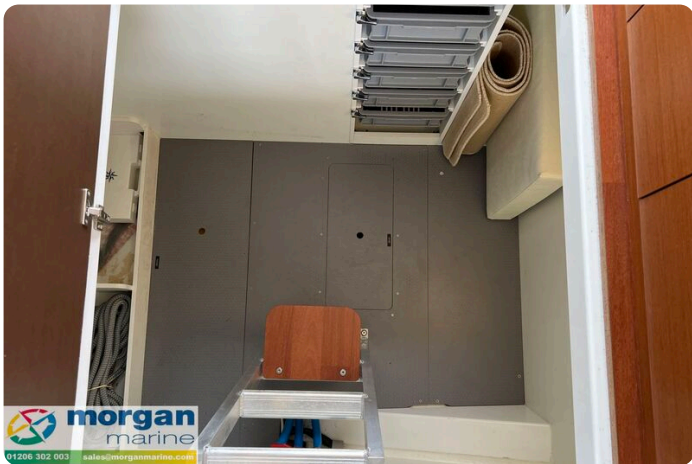












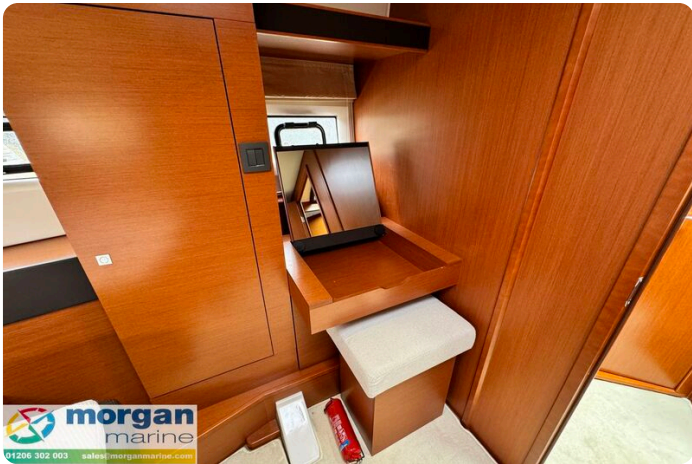






















Morgan Marine

The Boatyard, Shipyard Estate
CO7 0AR Colchester
United Kingdom (UK)

Phone: 44(0)1206302003

<https://morganmarine.com>

