



Macgregor 26M

£17,995 • Brightlingsea Verenigd Koninkrijk • Gebruikt • 2004

Gepresenteerd door

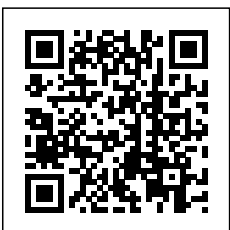
Peter Marchant
Phone: 44(0)1206302003

Morgan Marine
The Boatyard, Shipyard
Estate
CO7 0AR Colchester
Verenigd Koninkrijk



Details

Fabrikant:	Macgregor
Model:	26M
Jaar:	2004
Conditie:	Gebruikt
Motor:	, 300 hp
Motor type:	
Brandstoftype:	Benzine
Lengte:	7.85 m (25.75 ft)
Breedte:	2.36 m (7.74 ft)
Cabins:	0
Ligplaatsen:	0



Morgan Marine



7zea.com

Omschrijving

EN

Set sail with this 2004 MacGregor 26M, a unique and much-loved trailerable sailing yacht that's as comfortable cruising inland waters as it is exploring the open sea. Powered by a reliable Yamaha F50 outboard, this sail/motor cruiser combines the best of both worlds – the thrill of sailing and the convenience of motorised travel. Lovingly maintained and in good condition, this MacGregor 26M includes: Admiral 2-Wheel Trailer – Easy to tow and launch, making it perfect for weekend getaways or extended adventures, 4 comfortable Berths, galley area, sea toilet, sails and rigging system. This MacGregor is a standout in its class – known for its lightweight, water ballast system, and ease of handling. Whether you're a seasoned sailor or just starting out, this is the perfect boat for unforgettable memories on the water. Contact Morgan Marine today for early viewings - This is a highly specified example that won't be around long!!

Cabin: Forward V shaped double berth with hatch to deck. Stern double berth section. Saloon area with 2x bench style cushion seating with backrest and table. Interior carpets. Galley area with sink and lots of storage. Toilet compartment with fitted sea toilet (spare valve set). Fire blanket.

Cockpit: Cockpit steering wheel with engine throttle control. Cockpit lockers with removable fronts and latches.

Electronics: Standard Horizon chart plotter with C-map. Nasa Clipper log and depth gauges with covers (2018). Plastimo compass with cover (2004). Bilge pump with automatic float valve. LED bulbs throughout. 12v socket in cabin.

Machinery: 2004 Yamaha F50 CETL outboard with power trim and tilt. Fuel tank 6 US gallons + fuel line. New cambelt 2022. 2x Full sets of engine, engine lock, hatchway and anchor locker keys. Kill cord. Engine lock.

Trailer: 2 Wheel Admiral trailer 2022 with jockey wheel and winch. NB - the road trailer may not be in serviceable road worthy condition. It is recommended the buyer should inspect and service accordingly prior to use on public roads.

Algemene informatie

Fabrikant:	Macgregor
Model:	26M
Jaar:	2004
Conditie:	Gebruikt

Motor

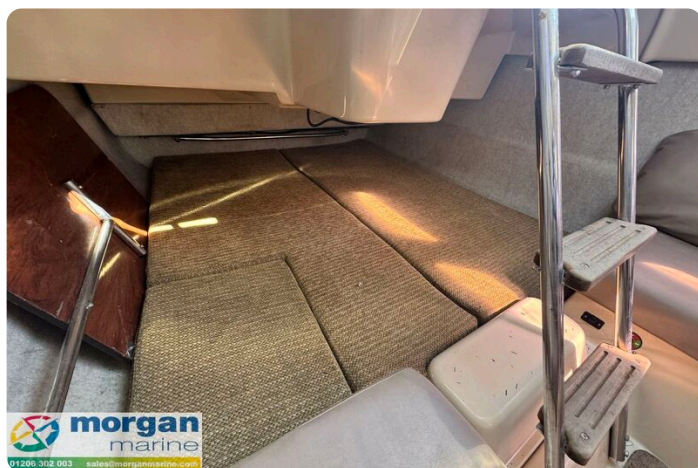
Motor:	, 300 hp
Motor type:	
Brandstoftype:	Benzine

Afmetingen

Lengte:	7.85 m (25.75 ft)
Breedte:	2.36 m (7.74 ft)
Diep:	1.75 m (5.74 ft)
Gewicht:	0 ()

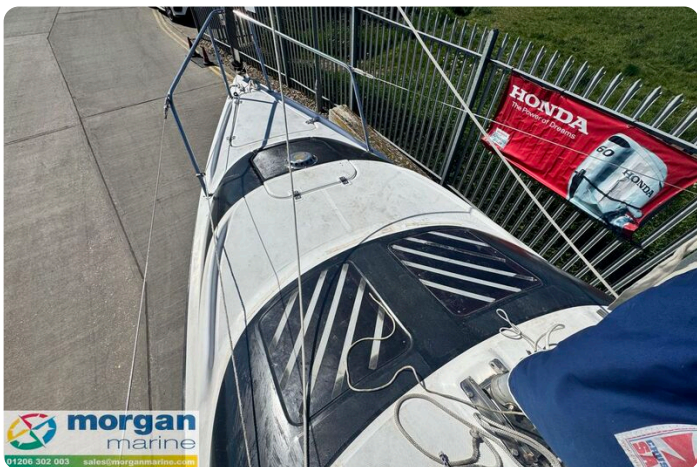
Accommodatie

Cabins:	0
Ligplaatsen:	0













Morgan Marine

The Boatyard, Shipyard Estate
CO7 0AR Colchester
Verenigd Koninkrijk
Telefoon: 44(0)1206302003
<https://morganmarine.com>

