



Pacific Allure 155

€179,000 • Wanssum Netherlands • Used • 1999

Presented by

Bram de Groot
Phone: 0031(0)478450015

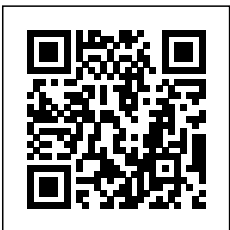
GrandYachts BV

Geijsterseweg 10
5861 BL Wanssum
Netherlands

GRANDYACHTS®

Details

Make:	Pacific Allure
Model:	155
Year:	1999
Condition:	Used
Hull:	Steel
Engine:	DAF DU 825 1999
Engine type:	Inboard engine
Fuel type:	Diesel
Fuel tank:	1750 l (462.30 gal)
Length:	16.3 m (53.48 ft)
Beam:	4.6 m (15.09 ft)
Cabins:	0
Berths:	3
Watertank:	1150 l (303.80 gal)



GrandYachts BV



7zea.com

Description

Offered by the official Pacific Yachts dealer. Yacht location: Wanssum / The Netherlands.

EU-VAT paid.

123 pictures on our website and in high resolution upon request by email.

This **Pacific Allure 155 Wheelhouse** is an absolute live aboard. It was constructed in 1999 by Pacific Shipyards and was completed by two other companies that did all technical work and the other was responsible for her interior woodwork.

The best they did was to install the unbeatable DAF workhorse, this 6 cylinder DAF DU 825 delivers 198hp and can operate 24/7/365. They are now truly unbreakable and will run a lifetime. During my sea-trial the engine did not smoke when cold, nor hot. Great condition!

Lady C sleeps 6 in two full beam staterooms and a side bunk bed cabin, both with ensuite central heated bathrooms with shower, wash basins and toilets.

Wheelhouse

Lady C's wheelhouse gives you comfort during your new ocean adventures, good visibility all around and a very comfy L-shaped bench is found on starboard. Great feature is that it can be opened to store 2 bicycles.

The equipment could use an update to modern standards, but therefore the central dashboard leaves plenty of space to built in all future gear.

Main features

- Hull & superstructure treated to zero in 2016, finished with 2K primer
- Painted blue, white and antifouling in 2020
- 1 x DAF DU 825 marine diesel / 1 x 198hp (only 2951 hours)
- Hurth heavy duty gearbox PRM 2:1
- 24v/55 amps alternator
- Propellor: 25" x 18"
- Shafts: stainless steel 50mm, triple bearings
- Aquadrive ModuLine thrust bearings
- Bow thruster (renewed and super powerfull)
- MT3 single morse control
- Fuel filters / separators
- Ruggerini 6 Kw marine generator with own battery, extra sound proofing and gas/water separator
- Mikuni MX40 central diesel heating system (zero sound)
- Electrolux fully automated power selector
- Victron Multiplus 24/3000/70 charger 70A/inverter 3000watts
- Victron digital multicontrol shore power limiter
- Victron Cyrix battery combiner/divider
- Victron ArgoFet Diode 3-outputs
- Victron Orion 24-12 VDC converter 20amps
- Isolation transformer for galvanic protection
- MPPT controller and 2 x 185 Watts solar panels
- 4 x 230Ah AGM service batteries
- 2 x 230Ah AGM starter batteries
- 2 x 230Ah AGM bow thruster batteries
- 60L Sigmar boiler
- 20L/m Hydrophore water pumo
- RM69 black water sewage pump
- Flojet deck wash installation
- Triple bilge pumps 1500L/h

- Fully Insulated hull and superstructure
- Gas detector
- Electric anchor winch with long chain
- Furuno GPS Navigator
- JRC LCD Radar
- Autopilot Uflex RA-200
- Autopilot remote HA-200
- Rudder indicator
- Liverpool & Glasgow Clinometer
- Analogue Hygrometer / Temperature
- Analogue Barometer
- Analogue Clock
- Horn
- Fire alarm system
- Water alarm system
- Technautic Battery Monitor
- Bow thruster Joystick
- Anchor winch
- Heavy duty anchor
- Sound system in wheelhouse with Bluetooth
- Alpine sound system in salon with CD
- Wiper controls and wash installation
- Glazing all CE and German Lloyds
- Portholes GEBO
- Built under CE
- Original owner's manual

Galley / dinette

The galley and dinette area is equipped to a very high level of comfort, central is her large L-shaped seating with dining table. A king size galley with 4 zone HOB, American style fridge/freezer, extraction fan, oven/grill/microwave and plenty cutlery/crockery storage. Very well placed is also her generator remote panel.

Plenty cupboards and other spaces house all needed equipment for a perfect live aboard.

Master stateroom

In the stern over her full beam you find the central heated master stateroom with king-size French bed and an ensuite bathroom, with wash basin and an oversized shower with hardened glass entrance doors, toilet and towel radiator. Furthermore in her master stateroom you find a make-up table, large wardrobes and seats. A modern rear view extra-large hatch complete her well designed owner's cabin.

Guest stateroom

In the bow you find the ample sized guest stateroom and bathroom, with shower.

The size of this guest cabin is very good for living on board with more than two.

2nd Guestroom

On port side you find a second guest room with a very well sized double bunk beds, good storage and it serves also as passage way towards the engine room.

Tanks:

- Fuel: 1750 litres
- Fresh water: 1150 litres
- Waste water: 1000 litres

Materials

Lady C was built out of special treated plasma cut steel.

- Sound proof engine room: 18mm+sound dampening layer+12mm
- Sound and thermic insulation
- Paint: Sikkens
- Railings: Stainless steel 316 polished
- Rubbing strikes: Stainless steel 316 polished
- Fender holders: Stainless steel 316 polished

Dimensions:

- Length overall:16.30m
- Length CE: 14.99m
- Beam: 4.60m
- Draft: 1.30m
- Weight: 23.000Kg empty
- Weight: 26.000Kg loaded

GrandYachts offers the details of this vessel in good faith but cannot guarantee or warrant the accuracy of this information nor warrant the condition of the vessel. A buyer should instruct his agents, or his surveyors, to investigate such details as the buyer desires validated. This vessel is offered subject to prior sale, price change, or withdrawal without notice.

Disclaimer

GrandYachts offers the details of this vessel in good faith but cannot guarantee or warrant the accuracy of this information nor warrant the condition of the vessel. A buyer should instruct his agents, or his surveyors, to investigate such details as the buyer desires validated. This vessel is offered subject to prior sale, price change, or withdrawal without notice.

General information

Make:	Pacific Allure
Model:	155
Year:	1999
Condition:	Used
Hull:	Steel

Engine

Engine:	DAF DU 825 1999
Engine type:	Inboard engine
Fuel type:	Diesel
Fuel tank:	1750 l (462.30 gal)

Measurements

Length:	16.3 m (53.48 ft)
Beam:	4.6 m (15.09 ft)
Deep:	0 m (0.00 ft)

Accommodation

Cabins:	0
Berths:	3
Watertank:	1150 l (303.80 gal)
Holdingtank:	1000 l (264.17 gal)

Images



Pacific Allure 155



Pacific Allure 155



Pacific Allure 155



Pacific Allure 155



Pacific Allure 155



Pacific Allure 155



Pacific Allure 155



Pacific Allure 155



Pacific Allure 155



Pacific Allure 155



Pacific Allure 155



Pacific Allure 155



Pacific Allure 155



Pacific Allure 155



Pacific Allure 155



Pacific Allure 155



Pacific Allure 155



Pacific Allure 155



Pacific Allure 155



Pacific Allure 155



Pacific Allure 155



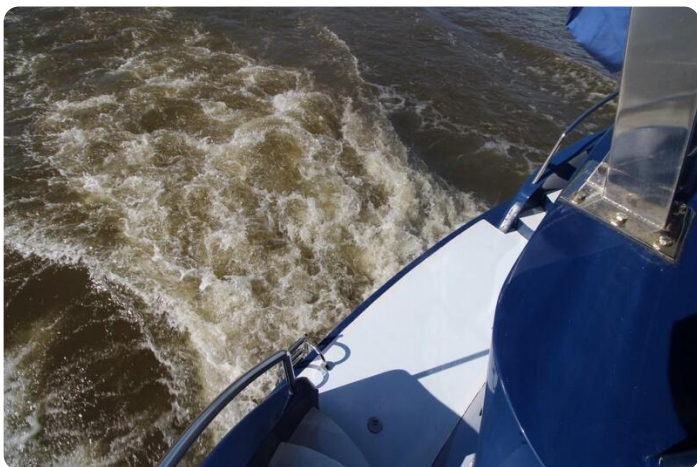
Pacific Allure 155



Pacific Allure 155



Pacific Allure 155



Pacific Allure 155



Pacific Allure 155



Pacific Allure 155



Pacific Allure 155



Pacific Allure 155



Pacific Allure 155



Pacific Allure 155



Pacific Allure 155



Pacific Allure 155



Pacific Allure 155



Pacific Allure 155



Pacific Allure 155



Pacific Allure 155



Pacific Allure 155



Pacific Allure 155



Pacific Allure 155



Pacific Allure 155



Pacific Allure 155



Pacific Allure 155



Pacific Allure 155



Pacific Allure 155



Pacific Allure 155



Pacific Allure 155



Pacific Allure 155



Pacific Allure 155



Pacific Allure 155



Pacific Allure 155



Pacific Allure 155



Pacific Allure 155



Pacific Allure 155



Pacific Allure 155



Pacific Allure 155



Pacific Allure 155



Pacific Allure 155



Pacific Allure 155



Pacific Allure 155



Pacific Allure 155



Pacific Allure 155



Pacific Allure 155



Pacific Allure 155



Pacific Allure 155



Pacific Allure 155



Pacific Allure 155



Pacific Allure 155



Pacific Allure 155



Pacific Allure 155



Pacific Allure 155



Pacific Allure 155



Pacific Allure 155



Pacific Allure 155



Pacific Allure 155



Pacific Allure 155



Pacific Allure 155



Pacific Allure 155



Pacific Allure 155



Pacific Allure 155



Pacific Allure 155



Pacific Allure 155



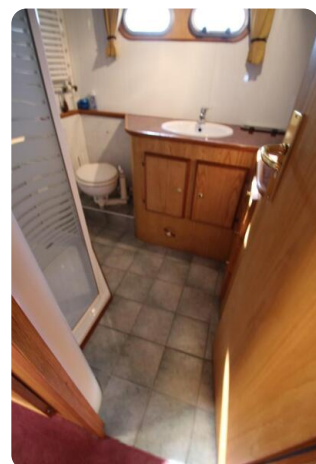
Pacific Allure 155



Pacific Allure 155



Pacific Allure 155



Pacific Allure 155



Pacific Allure 155



Pacific Allure 155



Pacific Allure 155



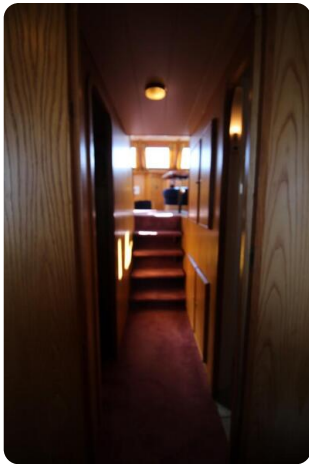
Pacific Allure 155



Pacific Allure 155



Pacific Allure 155



Pacific Allure 155



Pacific Allure 155



Pacific Allure 155



Pacific Allure 155



Pacific Allure 155



Pacific Allure 155



Pacific Allure 155



Pacific Allure 155



Pacific Allure 155



Pacific Allure 155



Pacific Allure 155



Pacific Allure 155



Pacific Allure 155



Pacific Allure 155



Pacific Allure 155



Pacific Allure 155



Pacific Allure 155



Pacific Allure 155



Pacific Allure 155



Pacific Allure 155



Pacific Allure 155



Pacific Allure 155



Pacific Allure 155



Pacific Allure 155



Pacific Allure 155



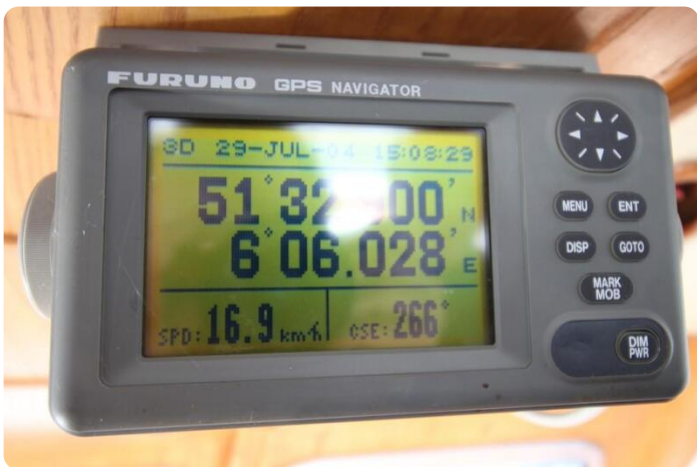
Pacific Allure 155



Pacific Allure 155



Pacific Allure 155



Pacific Allure 155



Pacific Allure 155



Pacific Allure 155

GrandYachts BV

Geijsterseweg 10
5861 BL Wanssum
Netherlands

Phone: 0031(0)478450015

<https://grandyachts.eu>



GRANDYACHTS®