

Pollard Stavast Trawler 1200

€429,000 • Norddeutschland Germany • Used • 2015

Presented by

Jan Spengler
Phone: +49 4101 5155566

**Michael Schmidt &
Partner Yachthandels
GmbH**

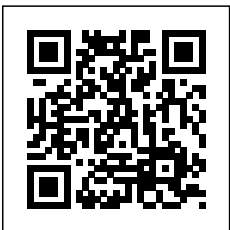
Rübekamp 5
25421 Pinneberg
Germany



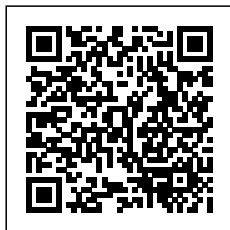
Michael Schmidt & Partner
International Yachtbrokers

Details

Make:	Pollard
Model:	Stavast Trawler 1200
Year:	2015
Condition:	Used
Engine:	Vetus Deutz, 175 hp
Engine type:	
Fuel type:	Diesel
Fuel tank:	800 l (211.34 gal)
Length:	12 m (39.37 ft)
Beam:	3.95 m (12.96 ft)
Cabins:	0
Berths:	0



Michael Schmidt &
Partner Yachthandels
GmbH



7zea.com

Description

EN

Individually built for a very experienced owner according to his specifications in a very high quality finish.

As a Dutch steel displacer, it is robust and durable, characterized by its classic design with a spacious saloon and panoramic windows

Inside there is a large saloon with seating area and steering position, a fully equipped galley, a spacious owner's cabin in the foreship and a guest cabin, Wet room with toilet and shower. The aft deck is spacious with steering position.

Exclusively on offer at Michael Schmidt & Partner. Central Agent! Detailed questions are welcome. Talk to us, we have visited this yacht for you.
More photos on request!

Staging and technical:
Stern Thruster (hydraulisch über Motor), Bow Thruster (hydraulisch über Motor).

IT

Individually built for a very experienced owner according to his specifications in a very high quality finish.

As a Dutch steel displacer, it is robust and durable, characterized by its classic design with a spacious saloon and panoramic windows

Inside there is a large saloon with seating area and steering position, a fully equipped galley, a spacious owner's cabin in the foreship and a guest cabin, Wet room with toilet and shower. The aft deck is spacious with steering position.

Exclusively on offer at Michael Schmidt & Partner. Central Agent! Detailed questions are welcome. Talk to us, we have visited this yacht for you.
More photos on request!

Allestimento tecnico e di coperta:
Elica di poppa - stern thruster (hydraulisch über Motor), Elica di prua - bow thruster (hydraulisch über Motor).

FR

Individually built for a very experienced owner according to his specifications in a very high quality finish.

As a Dutch steel displacer, it is robust and durable, characterized by its classic design with a spacious saloon and panoramic windows

Inside there is a large saloon with seating area and steering position, a fully equipped galley, a spacious owner's cabin in the foreship and a guest cabin, Wet room with toilet and shower. The aft deck is spacious with steering position.

Exclusively on offer at Michael Schmidt & Partner. Central Agent! Detailed questions are welcome. Talk to us, we have visited this yacht for you.
More photos on request!

Equipement de pont:
Propulseur de poupe (hydraulisch über Motor), Propulseur

d'étrave (hydraulisch über Motor).

DE

Für einen sehr erfahrenen Eigner nach seinen Vorgaben individuell in sehr hochwertiger Ausführung gebaut.

Als holländischer Stahlverdränger ist er robust und langlebig, bezeichnet durch sein klassisches Design mit großzügigem Salon und Panoramafenstern

Im Innenraum gibt es einen großen Salon mit Sitzecke und Steuerstand, eine voll ausgestattete Pantry, eine geräumige Eignerkabine im Vorschiff und eine Gästekabine, Nasszelle mit WC und Dusche. Das Achterdeck ist großzügig mit Steuerstand.

Exklusiv im Angebot bei Michael Schmidt & Partner. Central Agent! Detailfragen sind herzlich willkommen. Sprechen Sie uns an, wir haben diese Yacht für Sie besichtigt.
Weitere Fotos auf Anfrage!

Deck und technische Ausrüstung:
Heckstrahlruder (hydraulisch über Motor), Bugstrahlruder (hydraulisch über Motor).

ES

Individually built for a very experienced owner according to his specifications in a very high quality finish.

As a Dutch steel displacer, it is robust and durable, characterized by its classic design with a spacious saloon and panoramic windows

Inside there is a large saloon with seating area and steering position, a fully equipped galley, a spacious owner's cabin in the foreship and a guest cabin, Wet room with toilet and shower. The aft deck is spacious with steering position.

Exclusively on offer at Michael Schmidt & Partner. Central Agent! Detailed questions are welcome. Talk to us, we have visited this yacht for you.
More photos on request!

Equipo técnico y de cubierta:
Hélice de popa (hydraulisch über Motor), Hélice de proa (hydraulisch über Motor).

NL

Individually built for a very experienced owner according to his specifications in a very high quality finish.

As a Dutch steel displacer, it is robust and durable, characterized by its classic design with a spacious saloon and panoramic windows

Inside there is a large saloon with seating area and steering position, a fully equipped galley, a spacious owner's cabin in the foreship and a guest cabin, Wet room with toilet and shower. The aft deck is spacious with steering position.

Exclusively on offer at Michael Schmidt & Partner. Central Agent! Detailed questions are welcome. Talk to us, we have visited this yacht for you.
More photos on request!

Technische- en dekuitrusting:
Hekschroef (hydraulisch über Motor), Boegschroef (hydraulisch über Motor).

RU
Individually built for a very experienced owner according to his specifications in a very high quality finish.

As a Dutch steel displacer, it is robust and durable, characterized by its classic design with a spacious saloon and panoramic windows

Inside there is a large saloon with seating area and steering position, a fully equipped galley, a spacious owner's cabin in the foreship and a guest cabin, Wet room with toilet and shower. The aft deck is spacious with steering position.

Exclusively on offer at Michael Schmidt & Partner. Central Agent! Detailed questions are welcome. Talk to us, we have visited this yacht for you.
More photos on request!

Техническое оснащение и оснащение палубы:
Винт кормы - sterntruster (hydraulisch über Motor), Винт носовой части - bowtruster (hydraulisch über Motor).

General information

Make:	Pollard
Model:	Stavast Trawler 1200
Year:	2015
Condition:	Used

Engine

Engine:	Vetus Deutz, 175 hp
Engine type:	
Fuel type:	Diesel
Fuel tank:	800 l (211.34 gal)

Measurements

Length:	12 m (39.37 ft)
Beam:	3.95 m (12.96 ft)
Deep:	0.95 m (3.12 ft)
Weight:	16700 kg (36,816.58 lb)

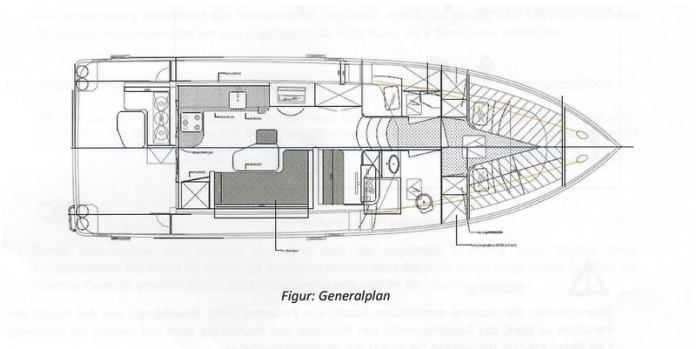
Accommodation

Cabins:	0
Berths:	0

Images



stavast 1200_69



Pollard Stavast 1200 Layout



stavast 1200_67



stavast 1200_64



stavast 1200_53



stavast 1200_49



stavast 1200_40



stavast 1200_24



stavast 1200_26



stavast 1200_27



stavast 1200_28



stavast 1200_31



stavast 1200_32



stavast 1200_8



stavast 1200_11



stavast 1200_23



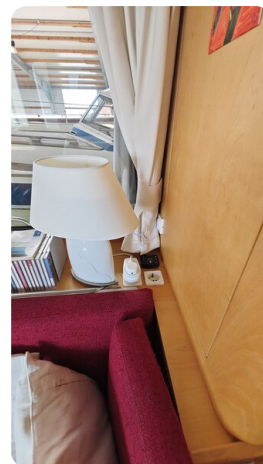
stavast 1200_13



stavast 1200_14



stavast 1200_15



stavast 1200_16



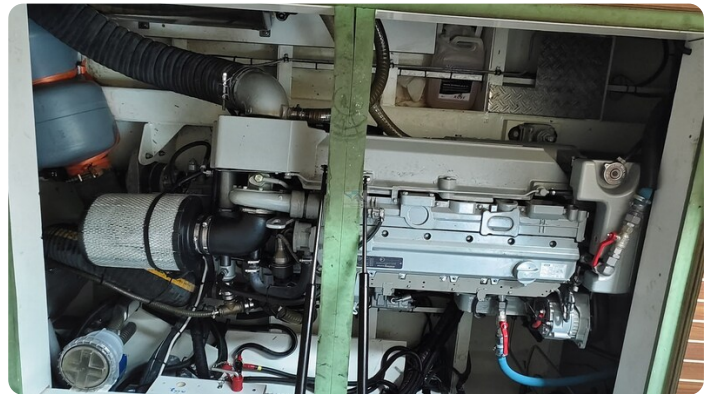
stavast 1200_21



stavast 1200_23



stavast 1200_4



stavast 1200_1

Michael Schmidt & Partner Yachthandels GmbH

Rübekamp 5
25421 Pinneberg
Germany

Phone: +49 4101 5155566

<https://www.msp-yacht.de>



Michael Schmidt & Partner
International Yachtbrokers