



Princess 36 Riviera

£56,000 • Brightlingsea Verenigd Koninkrijk • Gebruikt • 1991

Gepresenteerd door

Peter Marchant
Phone: 44(0)1206302003

Morgan Marine
The Boatyard, Shipyard
Estate
CO7 0AR Colchester
Verenigd Koninkrijk



Details

Fabrikant:	Princess
Model:	36 Riviera
Jaar:	1991
Conditie:	Gebruikt
Motor:	, 435 hp
Motor type:	
Brandstoftype:	Diesel
Lengte:	11.28 m (37.01 ft)
Breedte:	3.68 m (12.07 ft)
Cabins:	0
Ligplaatsen:	0



Morgan Marine



7zea.com

Omschrijving

EN

A classic sports yacht combining dynamic performance with voluminous accommodation and generous deck space - this is a great boat for entertaining family and friends! Her renowned Bernard Olesinski-designed hull features a deep "V" form and reverse sheer transom to maximise planning length and provide a high level of sea keeping. She will reach a maximum speed of 30 knots in the right conditions and will cruise at 22 knots. Twin shaft drives are housed within propeller tunnels to further optimise efficiency and enhance performance. A twin cabin layout, coupled with a spacious saloon offers accommodation for 6. The well-equipped galley features a large fridge with freezer compartment, cooker with oven, grill and hobs plus plenty of workspace. There is also a spacious separate head with shower facility. This boat has been well maintained by her 5 owners, has recently received a full engine service, antifoul, new anodes, replacement bilge pumps, new wiper blades, and comes with new (2022) leisure batteries and a refurbished canopy. She has a BSS certificate valid until September 2025 - early viewing is a must!

Deck: Self-draining cockpit, 2 forward facing double seats at forward end of cockpit, seating aft and starboard side converts to sunbed/double berth and a table for alfresco dining. Transom door for easy access to GRP transom bathing platform. Good amount of storage within cockpit areas. Wet bar/external galley with refrigerated icebox, sink, hot and cold pressurised water. Tinted and toughened safety glass windscreen with folding hood, cockpit Tonneau cover aft, GRP radar arch, cockpit lights, stainless steel handrails, safety vented gas locker, boat hook, fenders, mooring lines.

Cabin: Forward owner's cabin with large double berth featuring bespoke mattress with tailored protective cover and fitted sheets, storage below berth, lockers, shelves and drawers. There are also two large wardrobes, a dressing table with hinged mirror, access to chain locker, two opening port windows with stainless steel frames, deck hatch, overhead and reading lights. Aft cabin with large double berth, hanging locker, several storage lockers, opening port window to aft cockpit, overhead and individual berth lights, mirror and seat with storage under. Saloon area with large U-shaped dinette with storage below, double berth conversion, high level storage lockers, two opening port lights with stainless steel frames, overhead lighting. Separate head compartment with sea toilet; mirror, washbasin, shower with electric pump out, opening portlight with stainless steel surround.

Cockpit: Comprehensive dash with twin-lever engine controls, fuel gauges to each tank, rudder indicator, engine instruments and alarms, compass, circuit breaker panel, switch panel.

Electronics: Furuno GPS, Raytheon Radar, Speed and depth logs, Icom VHF radio. TV/DVD with chrome cast in saloon, Radio/CD player.

Machinery: Twin Volvo Penta TAMD61A, 306hp each. Shaft driven. Trim tabs, automatic bilge pumps with remote control switching, manual bilge pump, hot water calorifier, automatic fire extinguishers to engine room, fire extinguishers in cockpit, fuel balancing pipe with shut off, hot water calorifier.

Trailer: None

Algemene informatie

Fabrikant:	Princess
Model:	36 Riviera
Jaar:	1991
Conditie:	Gebruikt

Motor

Motor:	, 435 hp
Motor type:	
Brandstoftype:	Diesel

Afmetingen

Lengte:	11.28 m (37.01 ft)
Breedte:	3.68 m (12.07 ft)
Diep:	0.76 m (2.49 ft)
Gewicht:	0 ()

Accommodatie

Cabins:	0
Ligplaatsen:	0



Princess 36 Riviera



Princess 36 Riviera-Cockpit



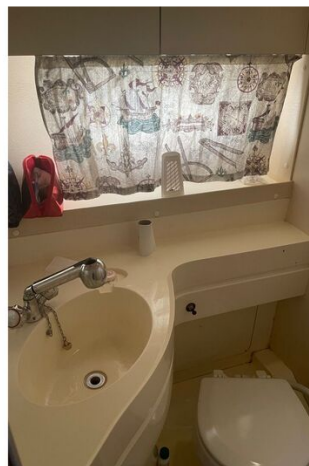
Princess 36 Riviera-aft-berth



Princess 36 Riviera-dash



Princess 36 Riviera-cockpit



Princess 36 Riviera-toilet



Princess 36 Riviera-berth



Princess 36 Riviera-cockpit-sink



Princess 36 Riviera-seating



Princess 36 Riviera-stern



Princess 36 Riviera-dash



Princess 36 Riviera-back



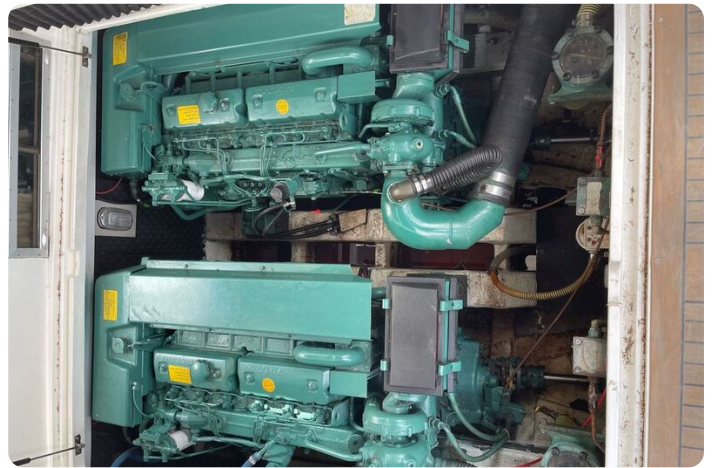
Princess 36 Riviera-lines



Princess 36 Riviera-tv



Princess 36 Riviera-canopy



Princess 36 Riviera-engine



Princess 36 Riviera-front



Princess 36 Riviera-back



Princess 36 Riviera-cockpit-table



Princess 36 Riviera-overview



Princess 36 Riviera-saloon-seating



Princess 36 Riviera-co-pilot-seating

Morgan Marine

The Boatyard, Shipyard Estate
CO7 0AR Colchester
Verenigd Koninkrijk
Telefoon: 44(0)1206302003
<https://morganmarine.com>

