



Princess V52

€579,000 • Gryts Varv Zweden • Gebruikt • 2012

Gepresenteerd door

Justin Garwell
Phone: +44 (0) 1305 766504

JD YACHTS LIMITED
80 THE ESPLANADE
DT4 7AA WEYMOUTH
Verenigd Koninkrijk

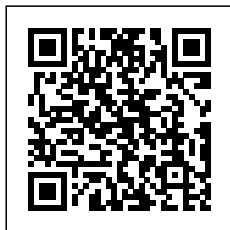


Details

Fabrikant:	Princess
Model:	V52
Jaar:	2012
Conditie:	Gebruikt
Motor:	Volvo D11-670, 670 hp
Motor type:	
Brandstoftype:	Diesel
Lengte:	16.4 m (53.81 ft)
Breedte:	4.22 m (13.85 ft)
Cabins:	0
Ligplaatsen:	0



JD YACHTS
LIMITED



7zea.com

Omschrijving

ENG
2012. 2 x 670 HP Volvo D11-670
6 berths in 3 cabins
Lying: Gryts Varv Sweden

ENG
Extras

Air Conditioning
Eberspacher Heating Throughout
Yacht Controller
SidePower Bow Thruster
SidePower Stern Thruster
Hi-Lo Hydraulic Bathing Platform
Onan Generator 7KW
Glomex Webboat WiFi
AIS
BOSE Sound System to Saloon
Heated Towel Rails to both Heads
Teak Laid Bathing Platform
Teak Laid Cockpit
Windlass to Bow & Stern
Pilot & Co-Pilot Seats Re-Upholstered (2020)
Cockpit Seating Re-Upholstered in Nirox (2020)
Cockpit Sofa Re-Upholstered (2020)

Standard Specification

Water System

Water capacity totalling 80 gallons/96 US gallons/364 litres including 11 gallon/13 US gallon/50 litre hot water calorifier
Water heated by engine and 240v immersion heater
Automatic water pump with filter
Main circuit breaker at switch panel
Water level gauge
Deck filler

Fuel System

Twin fuel tanks (in NS8 marine grade alloy) with interconnection system giving 440 gallons/528 US gallons/ 2000 litres capacity
Fuel fillers on both side decks
High-capacity fuel filter/water trap
Remote fuel cocks in cockpit locker
Fuel gauges on helm console

Power And Drive Systems

Twin conventional engine installation driven through V drive gearboxes
Engine room lighting
Power-assisted steering
Trim tabs with indicators and auto tab function
Electronic engine controls
Engine room extractor fans with electronic time delay
Dripless shaft seals

Electrical Systems

24 Volt:
4 x heavy-duty batteries for engine starting
4 x heavy-duty auxiliary batteries
Engine alternators charge via split charge relays to isolate engine start batteries from auxiliaries
80-amp 24v float battery charger
Battery paralleling system (for engine start back-up)
Remote battery master switches with control switch at main

panel
Circuit breakers on all circuits
220/240 Volt:
7kW diesel generator with own starting battery and specially silenced exhaust
Shore support inlet
Generator/shore support change over switch
Power points in owner's cabin, forward guest cabin, galley (double) and saloon
Polarity check system
Earth leakage safety trip
Shaver points in both bathrooms

En-suite Bathroom

Avonite worktop
Wash basin with Monobloc mixer tap
Separate shower cubicle
Mirror
Storage locker

Forward Guest Cabin

Scissors berths (double/single conversion)
Wardrobe
Deck hatch and fixed skylights with integrated fly screen and blind
Storage lockers
Downlighters and individual berth lights forward

En-suite Bathroom

Wash basin with Monobloc mixer tap
Separate shower cubicle
Mirror
Storage locker

Accommodation

All cabins feature opening portholes and 240v power points
All bathrooms feature electric quietflush toilets and 240v shaver points

Owner's Stateroom

Large double bed with drawers below
Wardrobe with shelves
Drawers and storage lockers
Overhead and individual berth lights
Sofa
Fixed and opening portlight

Upper Saloon

U-shaped sofa
Dining table
Cocktail cabinet
Overhead downlighters
Electric opening roof
Triple stainless-steel framed sliding doors to cockpit
Opening window (port)
Radio/CD with saloon and cockpit speakers
Timber flooring

Galley

Avonite (or similar) worktop
3 ring ceramic hob
Single stainless-steel sink with Monobloc mixer tap
Combination microwave/conventional oven with grill
Refrigerator with freezer compartment

Storage cupboards, drawers and lockers
Timber-laid flooring

Helm Position

Twin helm seats with sit/stand facility
Full engine instrumentation
Fuel gauges
Single-lever engine controls
Rudder position indicator
Power-assisted steering system with auto tab control and adjustable steering wheel
Remote control anchor winch
Trim tab controls with indicators
Autopilot
VHF with DSC R/T
Speed and distance log
Echo sounder with alarm
Remote control searchlight
High speed compass
Horn button
Chart table
Twin windscreen wipers
Windscreen freshwater pressure wash
Bilge pump controls with visual 'pump running' indicator (3)

Cockpit

Self-draining
U-shaped seating/dining area (converts to sunbed)
Folding teak table
Overhead and low level courtesy lights
Tonneau cover
Stainless-steel grabrails
Cockpit wetbar with sink, top loading coolbox, storage
Transom hatch to stern lazarette
Access hatch to engine room
220/240v shore support inlet in locker
Life raft locker
Electro-hydraulic raise/lower transom platform with integrated swimming ladder
Transom door
Hot and cold shower

Deck Fittings

Reversible electric anchor winch with foredeck and helm position controls
Self-stowing 20kg/44lb Delta anchor with 40m chain
Stemhead roller with automatic anchor launch and retrieve
Stainless-steel bow, stern and spring cleats
Stainless-steel pulpit and guardrails
Stainless-steel coachroof handrails
Foredeck hatch with integrated skylight
Stainless-steel rubbing band with rubber insert
Full set of IMCO navigation lights
Riding light
Remote control searchlight
Twin electric horns
Fuel and water fillers

3rd Cabin Layout

Two single berths
Wardrobe with shelf
Drawers
Storage lockers
Downlighters and individual berth lights

Standard Equipment

Power-assisted steering system
Bow thruster (120 kgf/265 lbf)
24v DC/240v AC electrical system
220v/240v generator (7Kw)
240v shore power with 80-amp float battery charger

Remote control electric anchor winch
Electro-hydraulic trim tabs
Autopilot
VHF with DSC R/T
Speed and distance log
Echo sounder with alarm
Remote control searchlight
Combination microwave/conventional oven/grill
Refrigerator with deep freeze compartment
Cockpit wetbar including sink and top loading coolbox
Electric quietflush toilets
Saloon LED TV/DVD/Radio/CD
Teak-laid transom platform/cockpit deck/stairs to side decks
Cockpit seating/dining area with sunbed conversion
Electrically operated sliding sunroof
Electro-hydraulic raise/lower transom platform
Transom door
Hot and cold transom shower
Cockpit cover

Fire Extinguishers

Automatic fire extinguisher in engine room and generator space

Bilge Pumps

Automatic electric bilge pumps with manual override (3 switches) in: engine room, forward accommodation and aft lazarette (3 in all)
High-capacity manual bilge pump with valve system and suction points in engine room and accommodation space

Algemene informatie

Fabrikant:	Princess
Model:	V52
Jaar:	2012
Conditie:	Gebruikt

Motor

Motor:	Volvo D11-670, 670 hp
Motor type:	
Brandstoftype:	Diesel

Afmetingen

Lengte:	16.4 m (53.81 ft)
Breedte:	4.22 m (13.85 ft)
Diep:	1.09 m (3.58 ft)
Gewicht:	21000 ()

Accommodatie

Cabins:	0
Ligplaatsen:	0

Afbeeldingen



Image courtesy of JD Yachts



Image courtesy of JD Yachts



Image courtesy of JD Yachts



Image courtesy of JD Yachts



Image courtesy of JD Yachts



Image courtesy of JD Yachts



Image courtesy of JD Yachts



Image courtesy of JD Yachts



Image courtesy of JD Yachts



Image courtesy of JD Yachts



Image courtesy of JD Yachts



Image courtesy of JD Yachts



Image courtesy of JD Yachts



Image courtesy of JD Yachts



Image courtesy of JD Yachts



Image courtesy of JD Yachts



Image courtesy of JD Yachts



Image courtesy of JD Yachts



Image courtesy of JD Yachts



Image courtesy of JD Yachts



Image courtesy of JD Yachts



Image courtesy of JD Yachts



Image courtesy of JD Yachts



Image courtesy of JD Yachts



Image courtesy of JD Yachts



Image courtesy of JD Yachts



Image courtesy of JD Yachts



Image courtesy of JD Yachts



Image courtesy of JD Yachts



Image courtesy of JD Yachts



Image courtesy of JD Yachts



Image courtesy of JD Yachts

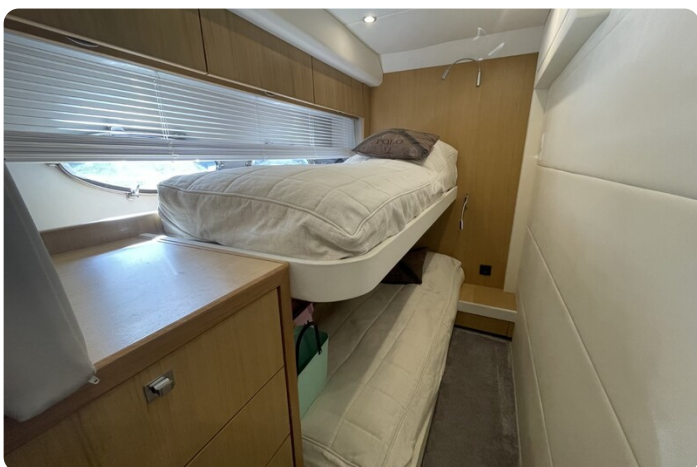


Image courtesy of JD Yachts



Image courtesy of JD Yachts



Image courtesy of JD Yachts



Image courtesy of JD Yachts



Image courtesy of JD Yachts



Image courtesy of JD Yachts



Image courtesy of JD Yachts



Image courtesy of JD Yachts

JD YACHTS LIMITED

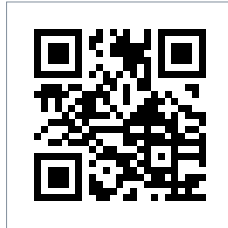
80 THE ESPLANADE

DT4 7AA WEYMOUTH

Verenigd Koninkrijk

Telefoon: +44 (0) 1305 766504

<http://jdyachts.com>



 YACHTS.