



# Procharter 28

£29,995 • Brightlingsea United Kingdom (UK) • Used • 2000

## Presented by

Peter Marchant  
Phone: 44(0)1206302003

**Morgan Marine**  
The Boatyard, Shipyard  
Estate  
CO7 0AR Colchester  
United Kingdom (UK)

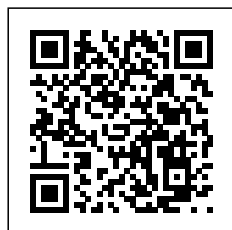


## Details

Make:	Procharter
Model:	28
Year:	2000
Condition:	Used
Engine:	, 300 hp
Engine type:	
Fuel type:	Diesel
Length:	8.53 m (27.99 ft)
Beam:	2.84 m (9.32 ft)
Cabins:	0
Berths:	0



Morgan Marine



7zea.com

# Description

EN

Just in at Morgan Marine Procharter 28, a proven offshore fishing boat powered by a reliable Yanmar 6LP 260hp inboard diesel engine. "Kontiki" has been lovingly maintained by her current owner, with no expense spared to keep her in top condition and ready for serious fishing. Built for strength, stability, and exceptional sea-keeping, the Procharter 28 earned its reputation as one of the best choices for pleasure and commercial operators. Equally suited for recreational or professional use, this versatile vessel offers comfortable overnight accommodation for two in the forward cabin, along with a separate heads compartment. The spacious deckhouse features a helmsman's chair, dining area, galley, and a full suite of navigation electronics for confident handling on the water. Fully serviced by Morgan Marine and ready to go with an extensive history of recent invoices, 'Kontiki' is the perfect choice for anyone seeking a dependable, seaworthy fishing boat. Contact us today to arrange an early viewing and experience her quality first hand.

Cabin: Forward separate 2 berth cuddy with deck hatch. Toilet compartment with toilet. New systems and sea cocks fitted in January 2025. Saloon seating with bench style seating with backrests and table. Galley area with sink, 2x gas burner cooker, and lots of cupboard storage. Excellent headroom.

Cockpit: Wheelhouse with large windscreen with windscreen wipers. Starboard side helm position with helm seat, full engine controls, large switch panel and navigation electronics.

Electronics: Advansea T50 5" Colour GPS chartplotter. Garmin Fishfinder 160. Garmin GPS 72. VHF radio. Shore power. Automatic and manual bilge pump. Horn (New January 2025). Anchor light (New January 2025). Navigation lights. Search light (New January 2025). USB socket (New January 2025). Silva compass. Yanmar engine gauges.

Machinery: Yanmar 6lp 260 hp inboard diesel stern drive engine - Full engine and stern drive service in January 2025.

## General information

Make:	Procharter
Model:	28
Year:	2000
Condition:	Used

## Engine

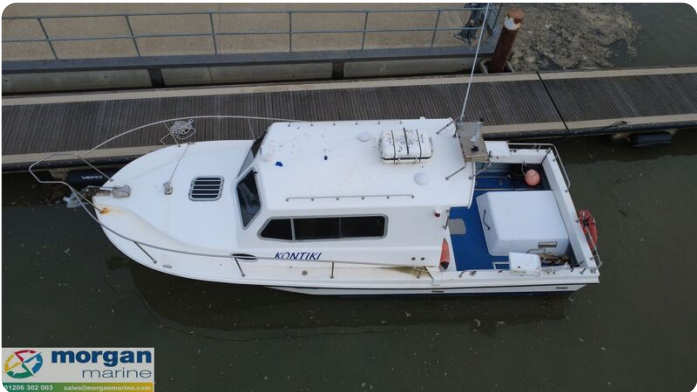
Engine:	, 300 hp
Engine type:	
Fuel type:	Diesel

## Measurements

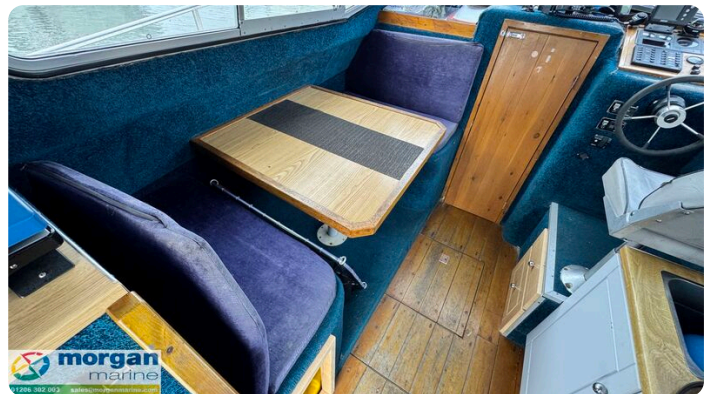
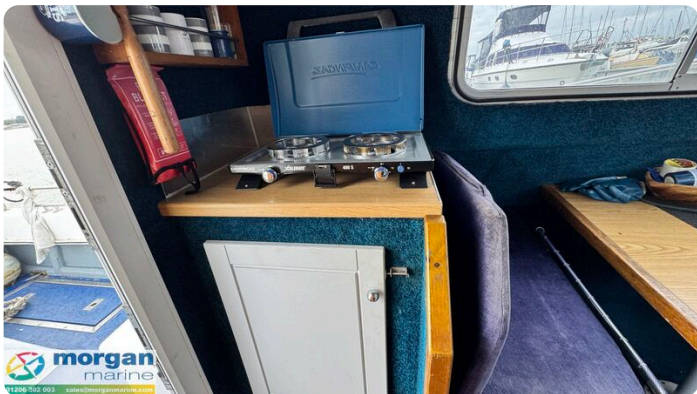
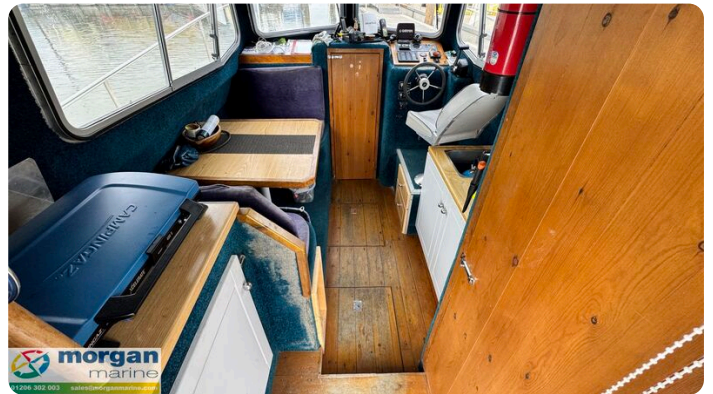
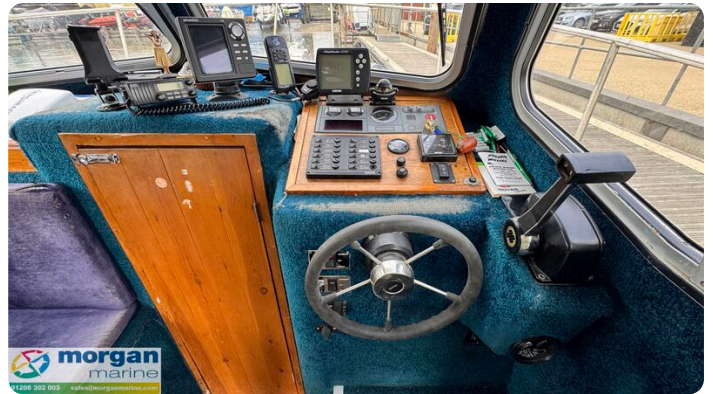
Length:	8.53 m (27.99 ft)
Beam:	2.84 m (9.32 ft)
Deep:	0.91 m (2.99 ft)
Weight:	0 ()

## Accommodation

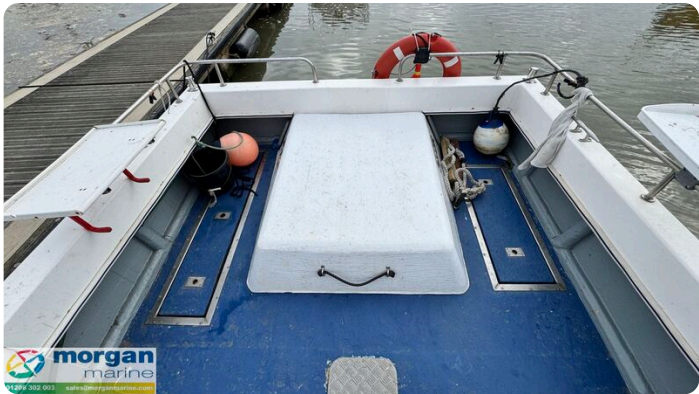
Cabins:	0
Berths:	0



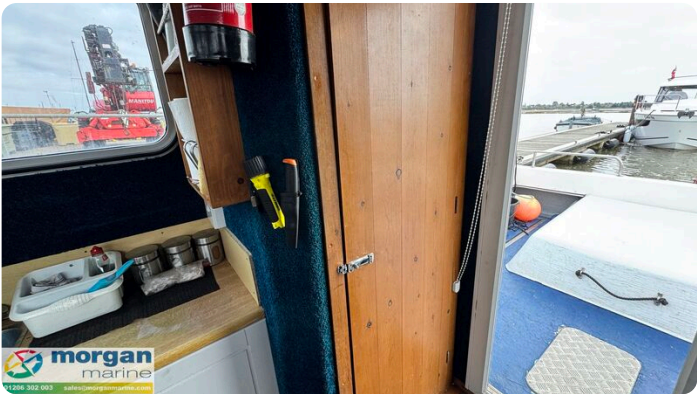




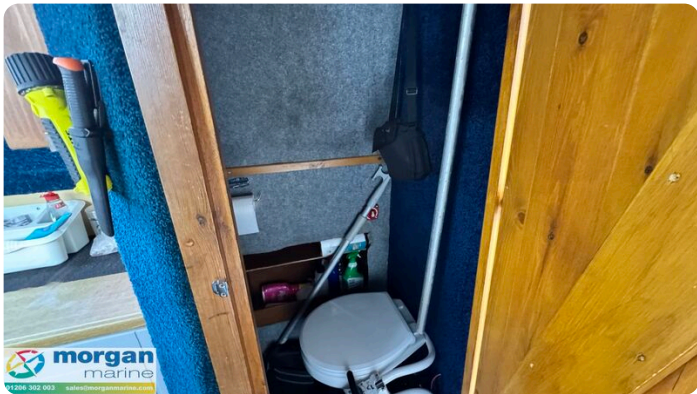












**Morgan Marine**

The Boatyard, Shipyard Estate  
CO7 0AR Colchester  
United Kingdom (UK)

Phone: 44(0)1206302003

<https://morganmarine.com>

