



Sealine F42

£299,950 • Lymington Verenigd Koninkrijk • Gebruikt • 2011

Gepresenteerd door

Justin Garwell
Phone: +44 (0) 1305 766504

JD YACHTS LIMITED
80 THE ESPLANADE
DT4 7AA WEYMOUTH
Verenigd Koninkrijk

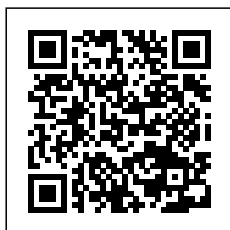


Details

Fabrikant:	Sealine
Model:	F42
Jaar:	2011
Conditie:	Gebruikt
Motor:	Volvo Penta IPS600, 435 hp
Motor type:	
Brandstoftype:	Diesel
Lengte:	13.6 m (44.62 ft)
Breedte:	4.48 m (14.70 ft)
Cabins:	0
Ligplaatsen:	0



JD YACHTS
LIMITED



7zea.com

Omschrijving

ENG

2011. 2 x 435 HP Volvo Penta IPS600
5 berths in 2 cabins
Lying: Lymington UK

ENG

Extras

NEW Flybridge Upholstery
NEW Cockpit Upholstery
Raymarine HybridTouch MFD GPS/Chartplotter to Upper Helm
Raymarine Radome
Raymarine Speed Log To Lower & Upper Helm Stations
Raymarine Depth Log To Lower & Upper Helm Stations
Additional 3rd Volvo Penta Joystick Docking Control located in Cockpit
Generator
2 X Eberspacher Diesel Heating
Fusion Stereo
Holding Tank
Flybridge Bimini
Cockpit Griddle
Cockpit Fridge
2 x 50 inch SMART TVs
2 x Additional SMART TVs

Standard Specification

Deck

Anchor, Delta 20 kg with 40m of chain
Anchor locker, self draining
Anchor safety leash
Deck moulding, non slip
Fender strip, silver anodised aluminium with black rubber insert
Foredeck hatch, opening
Fuel and water deck fillers
Navigation lights, full set
Open bow pulpit and guard rails in stainless steel
Windlass, reversible electric
Bow cleat
Spring cleats, 4
Mooring cleats, 4
Covered foot switches for windlass operation
Shore power socket
Low level LED lighting
Scuppers both port and stbd forward of steps
Large, full height screen, clear toughened glass
Full glass side window to port and starboard with opening system

Cockpit & Bathing Platform

Teak laid and self-draining
Teak steps to flybridge with LED lighting
Seating, □□ shaped to starboard
3 Piece sliding patio door
Under seat gas locker to stbd
Fender stowage in transom seat
Access to the lazarette under transom seat
Manual bilge pumps (2) in recess
Spotlighting
Bathing platform, teak laid
Swim ladder with flush sockets in platform
Handrails in stainless steel
Bathing shower with hot and cold water
Transom door, hinged
Access hatch to engine room, lockable with gas struts

Storage in port coaming adjacent to transom gate
Port stowage locker with provision for BBQ
Port stowage bin in coaming side with provision for fridge
Fuel taps
Stowage below flybridge steps
Stowage below transom seat adjacent to gas locker
Stowage bin below engine hatch
Main battery isolator switch
Lazarette (lockable) with access steps, light & access hatches to engineering spaces, ventilated oilskin hanging area

Flybridge

Fwd facing seating port and stbd, stbd converts to bench
Storage cupboards to port mid and port aft
Handrail on entrance to flybridge
Table, GRP with cup holders (4)
Mast, GRP and hinged
Anchor & steaming light, stern light, flag hooks, VHF radio aerial, Raymarine GPS locator, TV aerial, ensign socket and staff
Low level LED lighting and lighting to flybridge steps

Upper Helm

Sealine steering wheel, Tilt
Volvo engine instrumentation, full set
Engine controls, joystick and single lever throttles
Compass, side reading
Speed and depth log, Raymarine ST60 (2 gauges)
VHF, Ray 240 E radio
12 V DC socket
Cup holders, self draining, 4
Stowage
Dual helm bench seat, adjustable and converting to social seating

Saloon

Sideboard port side unit with storage
Radio, CD (2) speakers
L shaped seating to stbd
Moveable seats (2 +1) to port, with storage inside
Above used to convert L shaped seating to extra occasional berth
Surround windows, with opening port and starboard
Drop down blinds on flat side screens
Spot lighting
Table wooden - folding (moves to cockpit)
Electronic weather station
Provision for TV with storage under
Sockets, double (2) 230V (AC)

Lower Helm

Sealine steering wheel, Tilt
Double sliding helm seat
Volvo engine instrumentation, full set
Engine controls, joystick and single lever throttles
Armrest with stowage locker below
Compass, side reading
12V DC Socket
Speed and depth logs, Raymarine ST60 (2 gauges)
VHF, Ray 240 E radio
Chart area (Min A4)
Cup holder (2 min)
Storage boxes (3)

Galley

Large fridge with freezer with auto 12/230 V changeover
Spotlighting

Lighting above eye level cupboards
High level oven and grill, gas
Sink, stainless with mixer tap
Sockets, double (2) 230V (AC)
Soft close storage cupboards at worktop level
Soft close storage cupboards at eye level
Stove, gas (2) burner
Extractor fan above hob
Under floor storage (2)
Wooden steps to saloon with storage/bins under
Storage under lobby floor (without waste tanks)
Full height shelving unit in lobby

Master Forward Cabin

Berth, double with storage below
Vanity storage, port and stbd
Soft close wardrobes to port & stbd.
Mirror on back of stbd door
Single door to Galley
Magnetic floor mounted door stops
Door to shower
Door to head
Portlights to port (1) and stbd. (1), both opening
Curtains
Skylight hatch, opening with blind
Skylight fixed, aft of opening hatch
Sockets, single (2) (230V AC) port & stbd
Reading light (2)
Spotlighting
Concealed lighting
Soft close eye level cupboards to port and stbd
Carpet to floor

Master En-suite Shower

Spotlighting
Porthole, opening, frosted
Shower curtain
Handheld shower & bracket
Towel rail & robe hook
Shower seat
Shelf & fiddle rail
Extraction
Non slip GRP

Master En-suite Head

Cup, toilet roll holders
Toilet brush & holder
Hand basin with mixer tap
Spotlighting
Vanity unit above sink with mirror
Frosted portlight, opening
Shaver socket
Storage cupboard, low level
Toilet, Electric Quiet Flush
Towel rail & robe hook
Shelf & fiddle rail
Blind
Non slip GRP floor

Mid Cabin

Berth, with slide conversion from double to 2 singles
Storage under front of bed
3rd berth to stbd
Low level locker under step
Soft close full height wardrobe to stbd
Soft close full height shelving unit to stbd
Amidships locker unit & shelf
Door (with obscured gazing) to Galley
Closure of cabin to en-suite to create day head/shower
Door to en-suite bathroom
Large bonded windows to port and stbd , with inset opening
Blinds

Reading Lights (3)
Spotlighting
Sockets, single (2) (230V AC) port & stbd
Escape hatch to saloon

En-suite Bathroom To Mid Cabin / Day Head

Cup & toilet roll holder
Toilet brush & holder
Hand basin with mixer tap
Mirror with vanity unit behind
Storage in aft bulkhead
Frosted portlight, opening
Extraction
Blind
Shaver socket
Separate stall shower with glass door
Handheld shower & bracket
Storage cupboard, low level
Towel rail & robe hook
Toilet, electric quiet flush
Spotlighting
Non slip GRP floor
Skylight to saloon

Mechanical

Water tank, capacity □ 450 litres
Bilge pumps, automatic electric (2) and manual (2)
Engine room sound proofing
Engine room fans (automatic)
Engine room lights
Fire extinguisher system, automatic and manual, in engine room with controls at both helms
Fuel tanks, 600 litres ea. (2)
Fuel filters for engines
Steering, Electric
Screen demisters running from engines (maintains clear screen only)

Electrical

AC system, 230V with shore support system
Batteries - domestic and stbd engine 4 x 105 Ah
Batteries - port engine 2 x 105 Ah with link switch
Batteries - Bow 1 x 105 Ah
Battery charger, 40 amp
Calorifier with immersion heater (55 litre)
DC system, 12V system
Fresh water pump
Water tank gauge
Shore power cable
Pantograph wipers, dual speed
Screen wash on both wipers

Decor

Walnut furniture
Flooring walnut, galley and lower helm
Flooring carpet, saloon and cabins
Upholstery interior - Linara fabric
Mattresses - split foam hi-comfort
Solid core matt black work surface in galley
Solid core matt black work surface in master and mid cabin en-suite heads

Canopies

Rear canopy 3 piece, with detachable sides including zipped access door and clear flexible windows
Rear canopy clamshell with easy drop down functionality
Two piece side canopies with roll up door section
Windscreen cover, PVC white
Lightweight flybridge tonneau cover with restraint system

Algemene informatie

Fabrikant:	Sealine
Model:	F42
Jaar:	2011
Conditie:	Gebruikt

Motor

Motor:	Volvo Penta IPS600, 435 hp
Motor type:	
Brandstoftype:	Diesel

Afmetingen

Lengte:	13.6 m (44.62 ft)
Breedte:	4.48 m (14.70 ft)
Diep:	1.15 m (3.77 ft)
Gewicht:	12900 ()

Accommodatie

Cabins:	0
Ligplaatsen:	0

Afbeeldingen



Image courtesy of JD Yachts



Image courtesy of JD Yachts



Image courtesy of JD Yachts



Image courtesy of JD Yachts



Image courtesy of JD Yachts



Image courtesy of JD Yachts



Image courtesy of JD Yachts



Image courtesy of JD Yachts



Image courtesy of JD Yachts



Image courtesy of JD Yachts



Image courtesy of JD Yachts



Image courtesy of JD Yachts



Image courtesy of JD Yachts



Image courtesy of JD Yachts



Image courtesy of JD Yachts



Image courtesy of JD Yachts



Image courtesy of JD Yachts



Image courtesy of JD Yachts



Image courtesy of JD Yachts



Image courtesy of JD Yachts



Image courtesy of JD Yachts



Image courtesy of JD Yachts



Image courtesy of JD Yachts



Image courtesy of JD Yachts



Image courtesy of JD Yachts



Image courtesy of JD Yachts



Image courtesy of JD Yachts



Image courtesy of JD Yachts



Image courtesy of JD Yachts



Image courtesy of JD Yachts



Image courtesy of JD Yachts

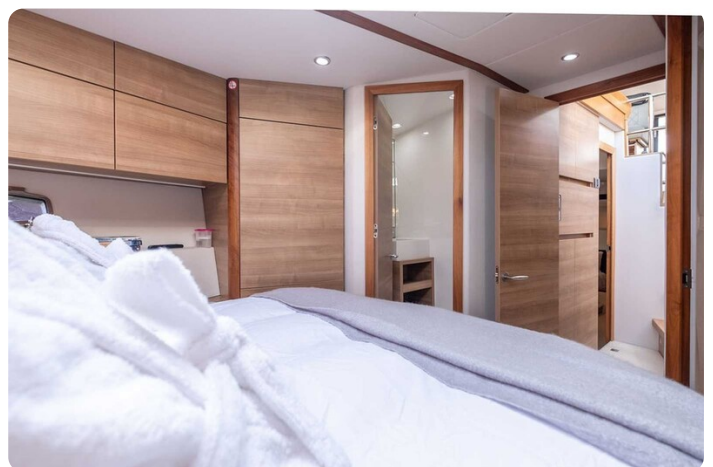


Image courtesy of JD Yachts



Image courtesy of JD Yachts



Image courtesy of JD Yachts



Image courtesy of JD Yachts



Image courtesy of JD Yachts



Image courtesy of JD Yachts



Image courtesy of JD Yachts



Image courtesy of JD Yachts



Image courtesy of JD Yachts



Image courtesy of JD Yachts



Image courtesy of JD Yachts



Image courtesy of JD Yachts



Image courtesy of JD Yachts



Image courtesy of JD Yachts



Image courtesy of JD Yachts

JD YACHTS LIMITED

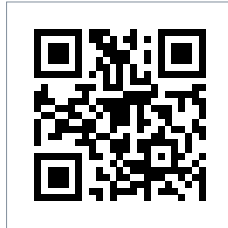
80 THE ESPLANADE

DT4 7AA WEYMOUTH

Verenigd Koninkrijk

Telefoon: +44 (0) 1305 766504

<http://jdyachts.com>



 YACHTS.

The logo consists of a stylized 'JD' monogram in orange and white, followed by the word 'YACHTS.' in white, all set against a solid black square background.